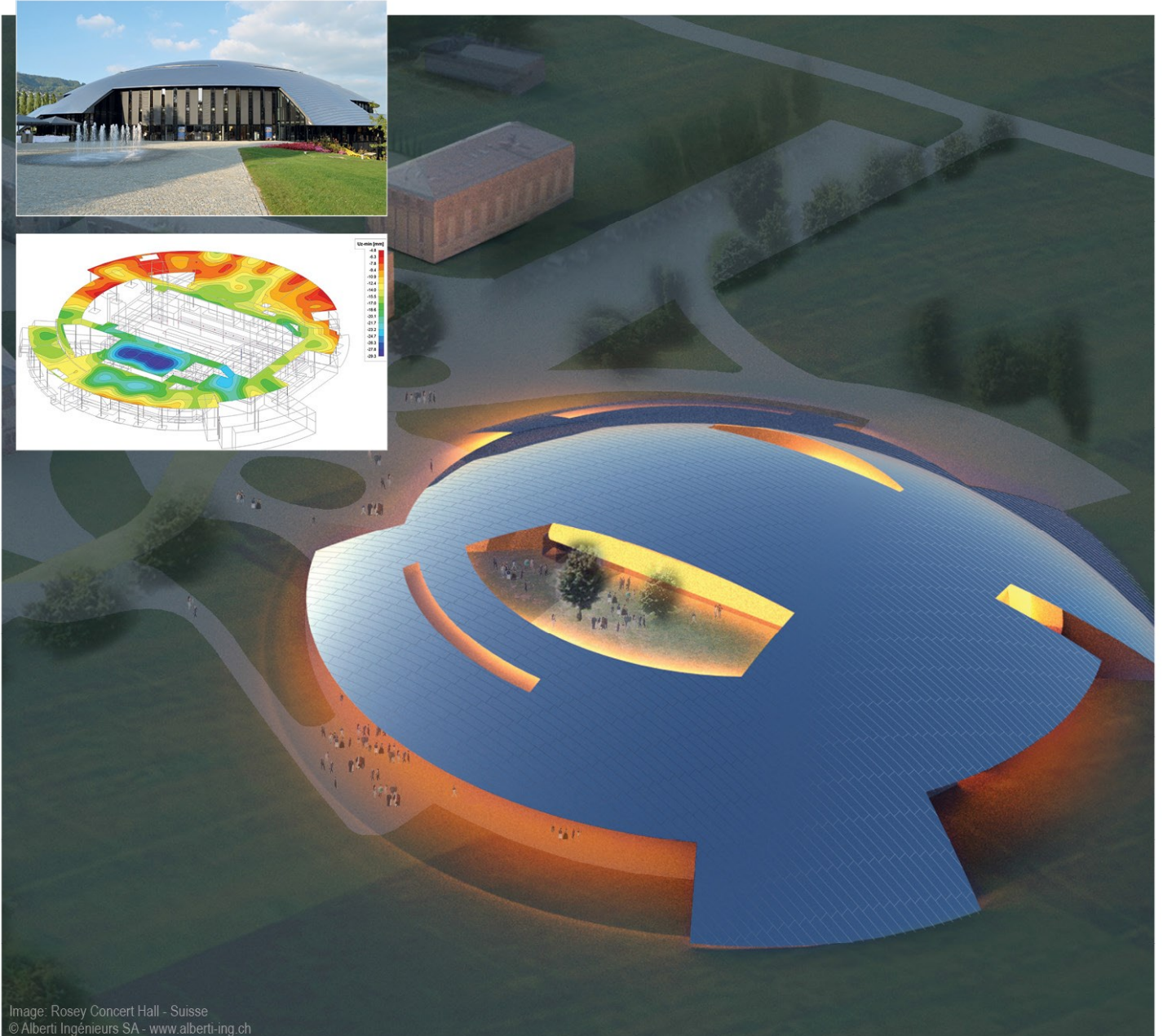


SCIENGINEER



Installation Guide

Updating Standalone Installation

Contacts	3
Step 1: Close all SCIA related software (SCIA Engineer, Design Forms, etc.)	4
Step 2: Open the protection setup (through Windows "Start")	5
Step 3: Select 'Import license file'	6
Step 4: Something went wrong...	7
System could not find attached SCIA dongle	8
Description	8
Solution	8
Checks	9
System detected an error while loading your license file	9
Description	9
Solutions	9
Checks	11
Could not store license file to the license folder	11
Description	11
Solutions	11
Counter X by license file of counter Y (X>Y)	13
Description	13
Solutions	14
Checks	14
Your license file is not stored on SCIA server	14
Description	14
Solution	14
Checks	14

Contacts

SCIA nv Industrieweg 1007 3540 Herk-de-Stad Belgium	SCIA Nederland B.V. Wassenaarweg 40 6843 NW ARNHEM Netherlands
Nemetschek do Brasil Rua Dr. Luiz Migliano, 1986 - sala 702 , CEP SP 05711-001 São Paulo Brazil	Nemetschek Scia North America 7150 Riverwood Drive 21046 Columbia, MD United States
SCIA France sarl Centre d'Affaires, 29 Grand' Rue 59100 Roubaix France	Nemetschek Scia Swiss Branch Office Dürrenbergstrasse 24 3212 Gurmels Switzerland
SCIA CZ s.r.o. Brno Slavičkova 827/1a 638 00 Brno Czech Republic	SCIA CZ s.r.o. Prague Evropská 2591/33d 160 00 Praha 6 Czech Republic
SCIA SK, s.r.o. Murgašova 1298/16 010 01 Žilina Slovakia	
Scia Datenservice Dresdnerstrasse 68/2/6/9 1200 WIEN Austria	Scia Software GmbH Technologie Zentrum Dortmund, Emil-Figge-Str. 76-80 44227 Dortmund Germany

All information in this document is subject to modification without prior notice. No part of this manual may be reproduced, stored in a database or retrieval system or published, in any form or in any way, electronically, mechanically, by print, photo print, microfilm or any other means without prior written permission from the publisher. SCIA is not responsible for any direct or indirect damage because of imperfections in the documentation and/or the software.

© Copyright 2016 SCIA nv. All rights reserved.

Document created: 18 / 02 / 2016

SCIA Engineer 15.3

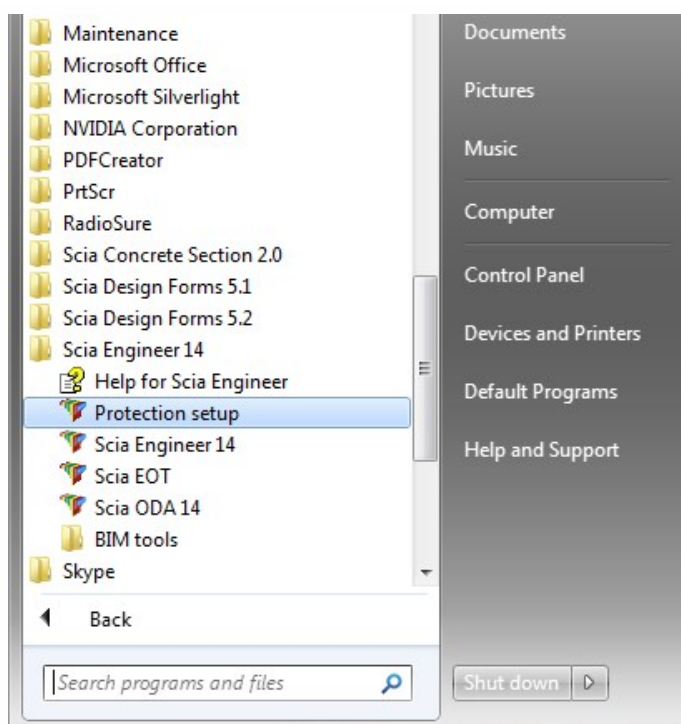
Step 1: Close all SCIA related software (SCIA Engineer, Design Forms, etc.)

First close everything related to SCIA software. This can be SCIA Engineer, SCIA Design Forms, or simply a message about no license being found.

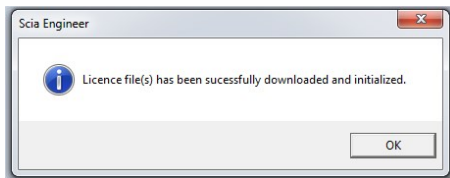
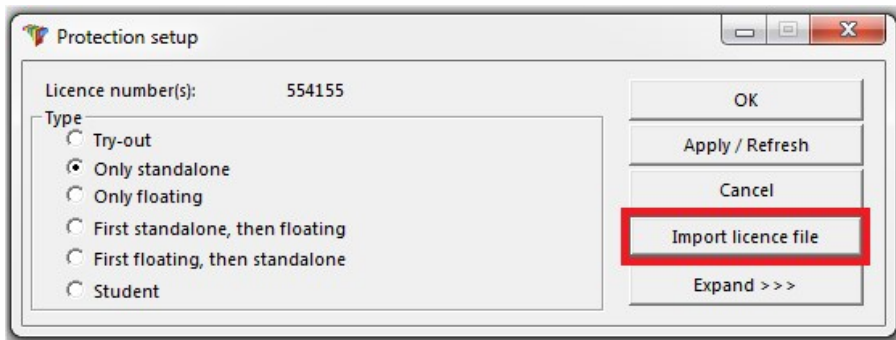
Step 2: Open the protection setup (through Windows "Start")

Open the protection setup for the SCIA software you want to use.

In this case, it is SCIA Engineer 14:



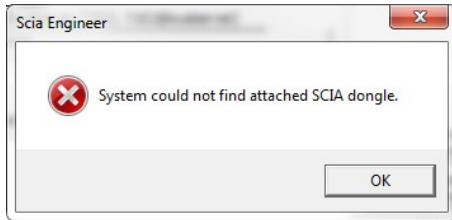
Step 3: Select 'Import license file'



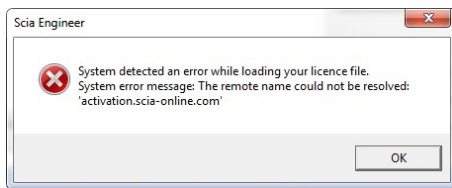
Now you're done!

.... Unless you didn't get the last message, but a different one. In that case, [go to step 4](#).

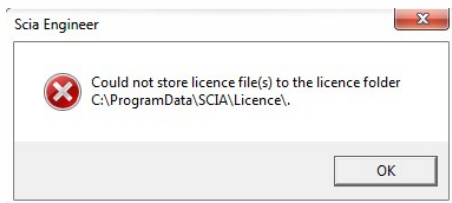
Step 4: Something went wrong...



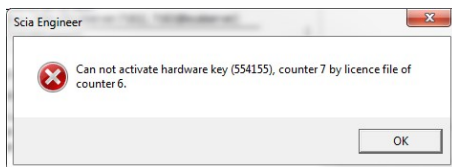
Go to chapter "System could not find attached SCIA dongle" on the next page



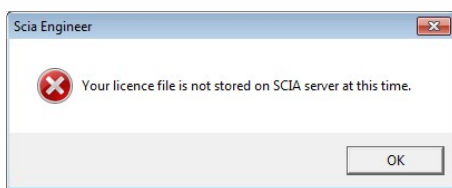
Go to chapter "System detected an error while loading your license file" on page 9



Go to chapter "Could not store license file to the license folder" on page 11



Go to chapter "Counter X by license file of counter Y (X>Y)" on page 13



Go to chapter "Your license file is not stored on SCIA server" on page 14

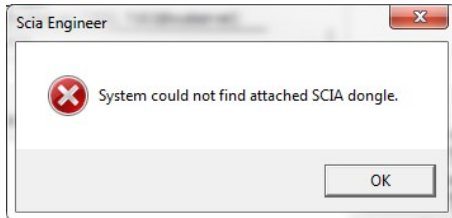


Do you have a different problem? If so, please contact us at support@scia.net with a print screen and a description of the problem.

System could not find attached SCIA dongle

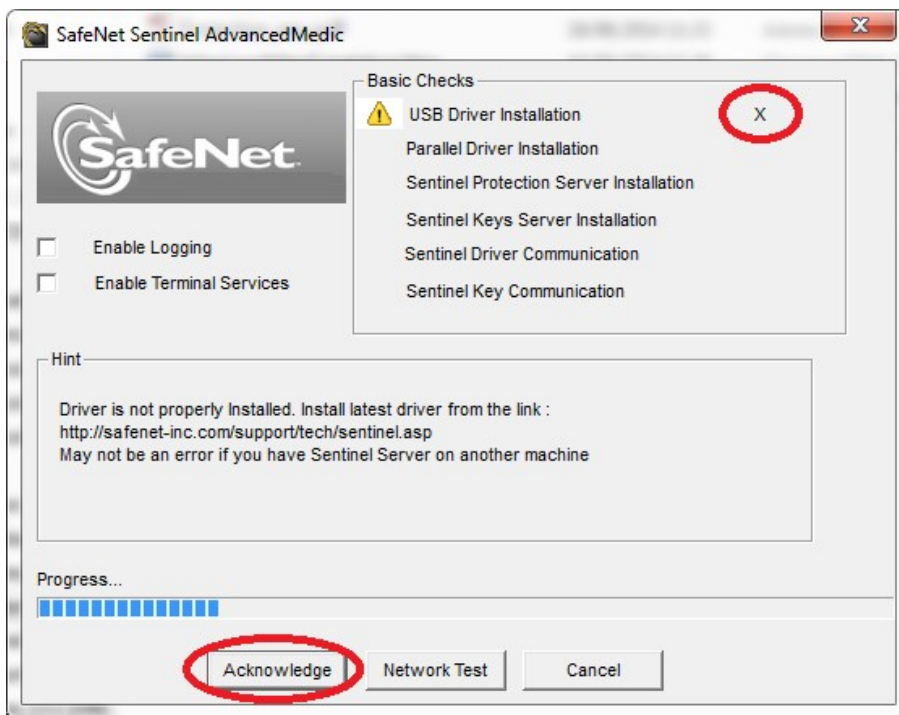
Description

→ The USB license key is not found



Solution

This problem can have 2 different causes.



Reason 1: The driver

1. Run the Sentinel Advanced Medic (extract and run Sam1.3.1.exe) (<http://www.safenet-inc.com/support-downloads/sentinel-drivers/>)
2. If it does not show at least 7.5.8 behind "USB Driver Installation", then run the Sentinel Protection Installer (<http://www.safenet-inc.com/support-downloads/sentinel-drivers/>)

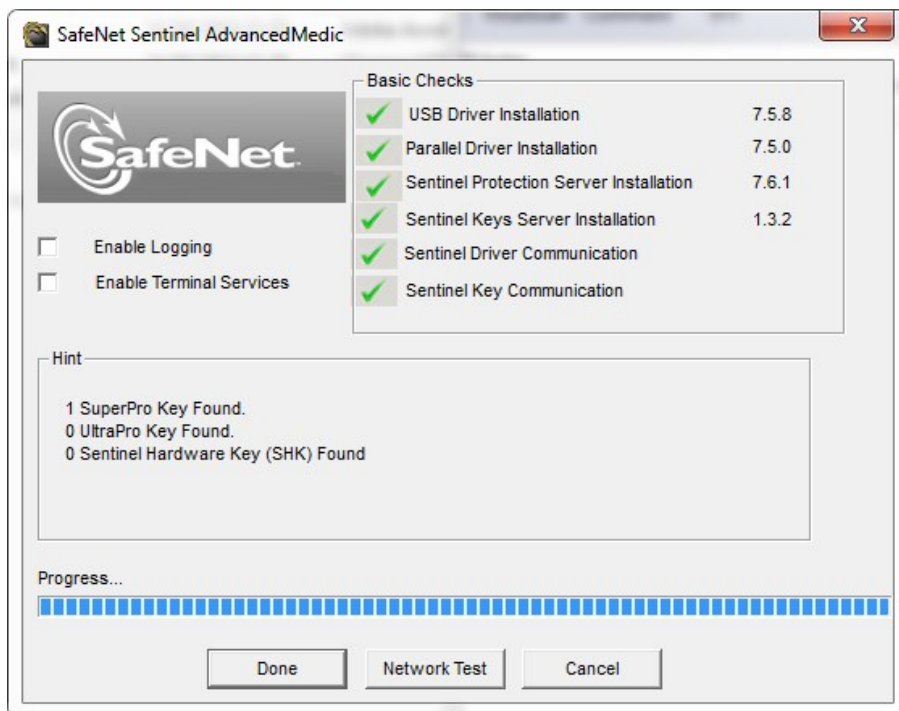
Reason 2: The USB key

1. Is it connected to the computer, and is the green light visible?
2. If no: try again on a different USB port and on a different computer.
3. If the light never lights up, then contact the main office for a replacement.
Replacement is free for customers with maintenance (if it broke down due to normal use) and 75€ (\$80 USD) in other cases. (<http://scia.net/en/contact/offices>)

Checks

Run the Sentinel Advanced Medic (Sam1.3.1.exe) and all checks should be good.

(<http://www.safenet-inc.com/support-downloads/sentinel-drivers/>)



If all checks are good, [try step 3 again](#).

System detected an error while loading your license file

Description

→ The "Protection Setup" could not connect to "activation.scia-online.com".

Solutions

This problem can be solved in 2 different ways.

Option 1: Fix the internet connection.

1. Can you browse on the internet
2. Is something blocking the "Protection Setup"? (firewall or anti-virus)

→ The 'Protection Setup' is a program called Lockman.exe, which is stored in the folder where SCIA Engineer is installed (C:\Program Files (x86)\SCIA\EngineerXX).

→ Make sure that your firewall or anti-virus does not prevent lockman.exe from connecting to the internet.

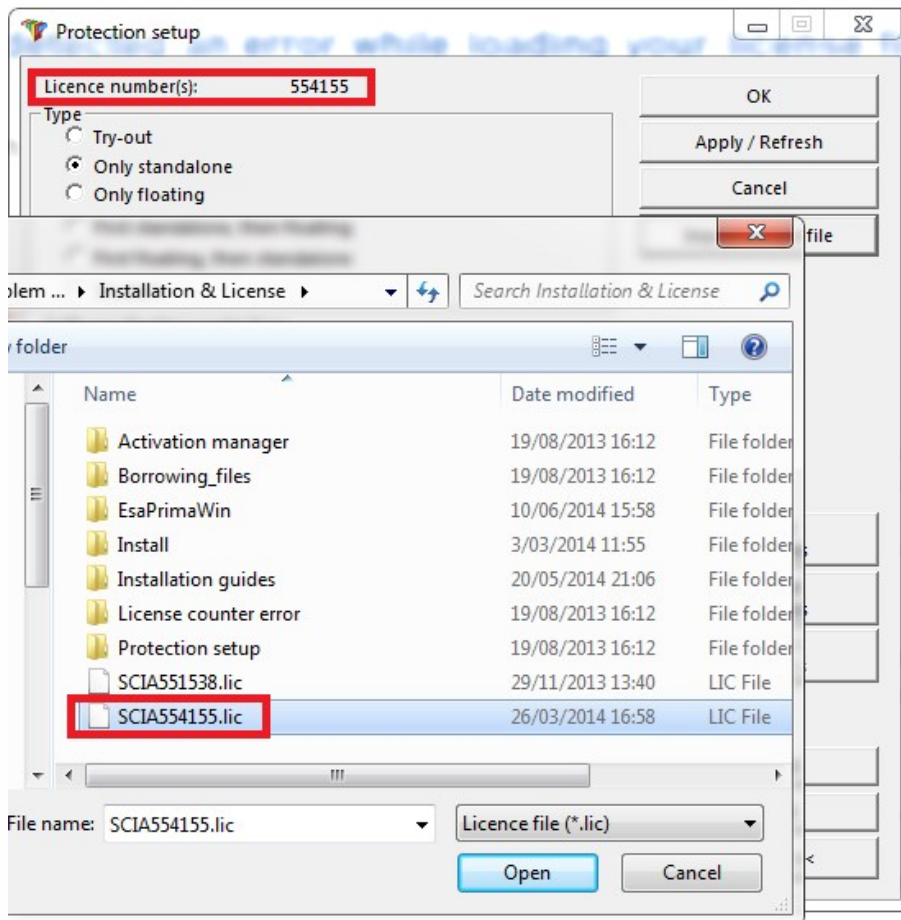
Option 2: Manually load the license file.

→ If you click on "Import license file" in the protection setup, you can click "OK" after receiving the error message. Then you will have the possibility to load in the license file manually.

1. Make sure you have the license file.

(Send a mail to support@scia.net, and indicate the license number on your USB key, which is a 6-digit number, starting with a 5. E.g.: 554155)

1. Pick the license file that matches the license number on your USB key.

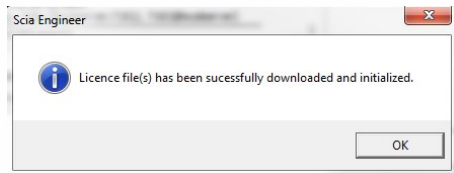




If SCIA support sends you both a .lic and a .e2c file, then always keep these two files together (in the same folder). The .e2c file will be necessary if your licenses contains an edition.

Checks

You should receive the next message:



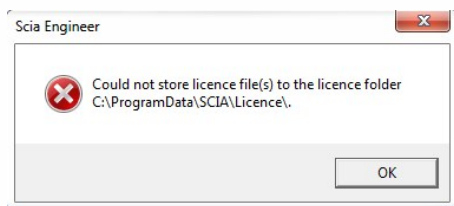
If you do, then you have successfully updated your license.

If you don't, then [go to step 4 and check what is going wrong.](#)

Could not store license file to the license folder

Description

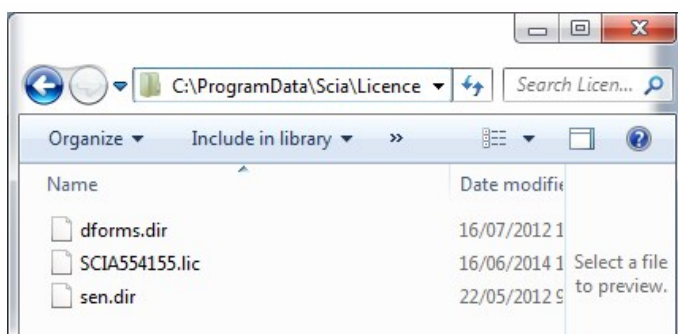
→ The "Protection Setup" can't write in the license folder



Solutions

This problem can be solved in 2 different ways.

Option 1: Go to the license folder (as shown in the message) and create it if necessary

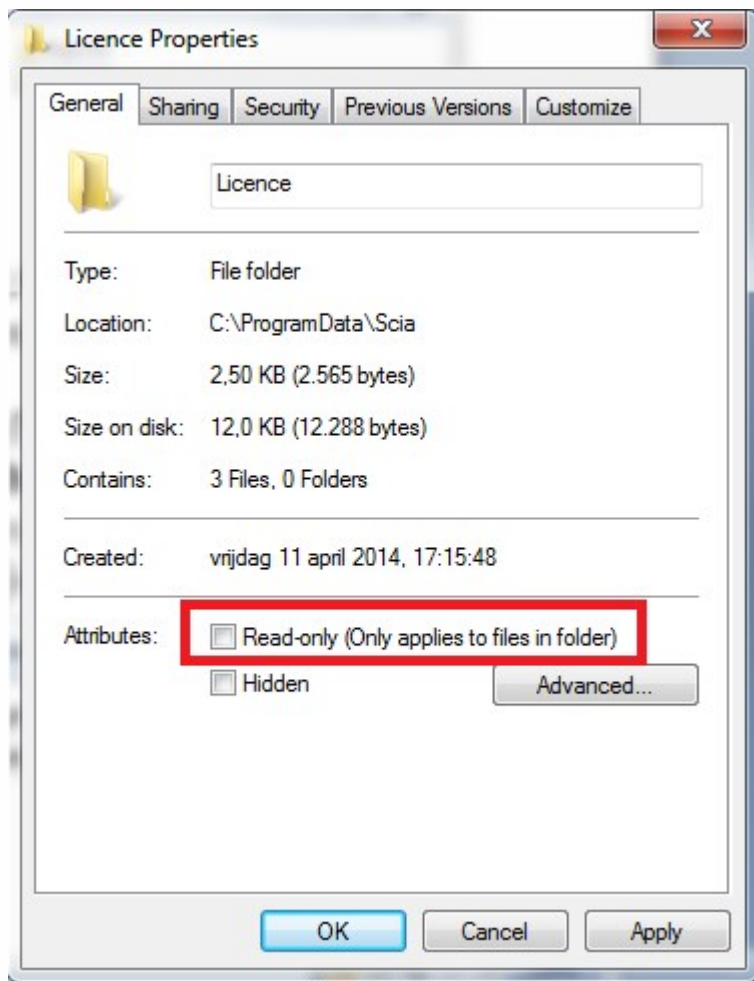


→ Example: C:\ProgramData\SCIA\Licence\

→ Go to the Properties of this folder

(right mouse button in the white space in the folder)

→ Make sure 'Read-Only' is ticked off.

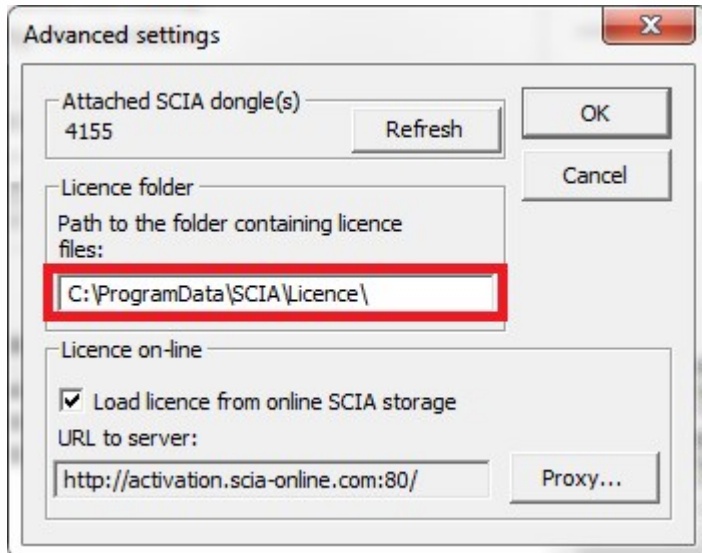
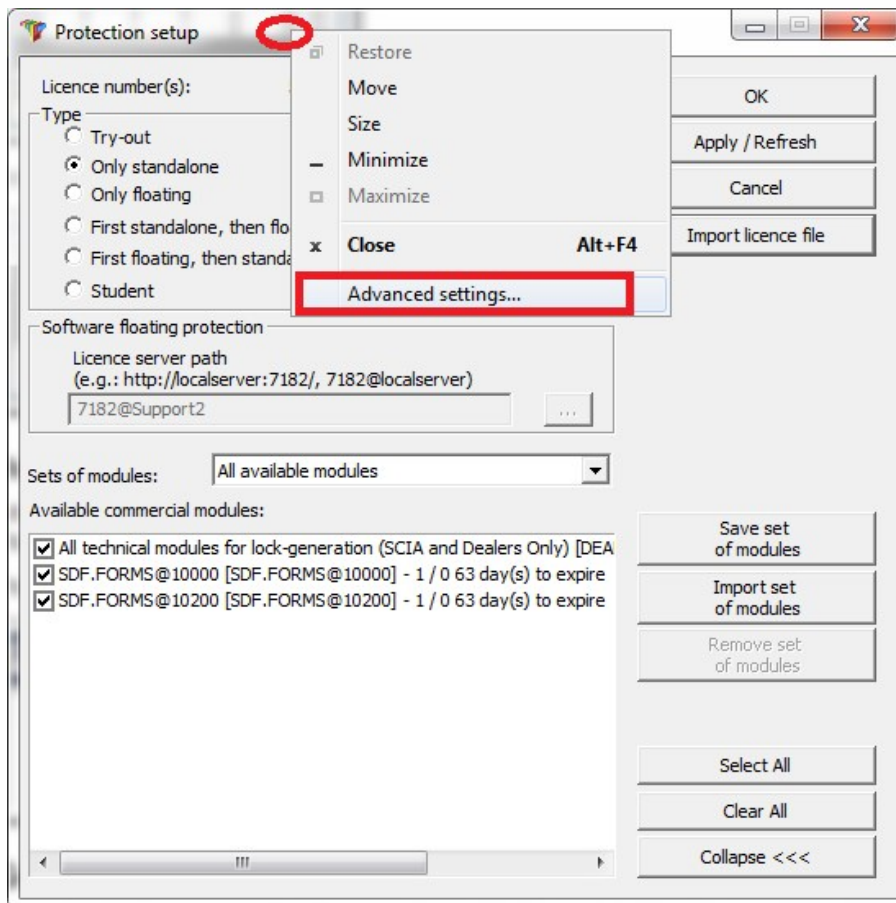


Option 2: Choose a different location to store the license files

→ In the "Protection Setup", you must click with the right mouse button, but the mouse icon must be placed on the title bar while clicking the right mouse button

→ In the next window, you can change the path where the license file must be located (see image below on the right).

→ The new license folder must exist and also NOT be "Read-only".

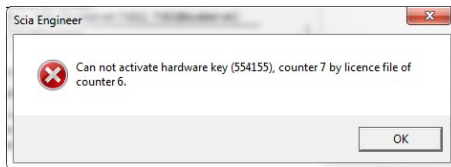


After applying these options, please try to import the license file again.

Counter X by license file of counter Y (X>Y)

Description

→ The license file you are loading is older than the license file on the USB key



Solutions

Get a newer license file by contacting SCIA support.

- Send the image of the message
- Ask them to check the license counter (and possibly generate it again)
- Ask for a new license file

(this is a SCIA5xxxxx.lic file and maybe a SCIA5xxxxx.e2c file)

Checks

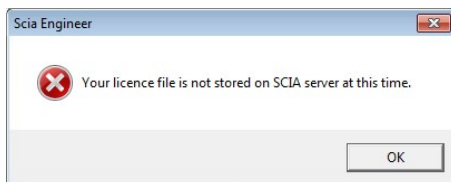
Once you receive a response, try to import the license file again

(if you pick a license file manually, then make sure to pick the new one)

Your license file is not stored on SCIA server

Description

- The “Protection Setup” can’t find the license files on the SCIA server.



Solution

The license file must be regenerated by contacting SCIA support (support@scia.net).

- Send the image of the message and give them your license key number
(on the back of your dongle, 6 digits, starting with '5xxxxx')
- Ask them to check the license file in the database (and possibly generate it again)
- Ask for a new license file

(this is a SCIA5xxxxx.lic file and maybe a SCIA5xxxxx.e2c file)

Checks

Once you receive a response, try to import the license file again

(if you pick a license file manually, then make sure to pick the new one)