

# SCiAENGINEER



## Installation Guide

Standalone Installation

---

---

<b>Contacts</b> .....	<b>3</b>
<b>1. Introduction</b> .....	<b>5</b>
1.1 Welcome .....	5
1.2 System Requirements .....	5
Hardware .....	5
Software .....	6
<b>2. Standalone installation</b> .....	<b>7</b>
2.1 Installation of SCIA Engineer .....	7
2.2 Starting SCIA Engineer .....	10
2.2.1 SCIA Engineer will start .....	11
2.2.2 SCIA Engineer will not start immediately .....	11
2.2.3 Update .....	12
2.3 Upgrade of dongle .....	12
2.4 Using more the one dongle on a computer .....	13
<b>3. Uninstalling SCIA Engineer</b> .....	<b>14</b>
3.1 Uninstalling with Add/Remove Programs in Windows .....	14
3.2 Uninstalling without Add/Remove Programs .....	15
<b>4. Troubleshooting</b> .....	<b>16</b>
4.1 Language module not found .....	16
4.2 Import license file is not possible .....	16
4.3 User Access Control .....	17

# Contacts

<p><b>Belgium Headquarters</b></p> <p>SCIA nv          Industrieweg 1007          B-3540 Herk-de-Stad          Tel: +32 13 55 17 75          E-mail: info@scia.net</p> <p>Support Phone          CAE (SCIA Engineer)          Tel: +32 13 55 09 90</p> <p>CAD (Allplan)          Tel: +32 13 55 09 80</p> <p>Support E-mail:          support@scia.net</p>	<p><b>France</b></p> <p>SCIA France sarl          Centre d'Affaires          29, Grand' Rue          FR-59100 Roubaix          Tel.: +33 3.28.33.28.67          Fax: +33 3.28.33.28.69          E-mail: france@scia.net</p> <p>Agence commerciale          8, Place des vins de france          FR-75012 Paris          Tel.: +33 3.28.33.28.67          Fax: +33 3.28.33.28.69          E-mail: france@scia.net</p>
<p><b>Brazil</b></p> <p>SCIA do Brasil Software Ltda          Rua Dr. Luiz Migliano, 1986 - sala 702 , CEP          SP 05711-001 São Paulo          Tel.: +55 11 4314-5880          E-mail: brasil@scia.net</p>	<p><b>USA</b></p> <p>SCIA North America          7150 Riverwood Drive          21046 Columbia, MD          Tel.: +1 443-542-0638          Fax: +1 410-290-8050          E-mail: usa@scia.net</p>
<p><b>Netherlands</b></p> <p>SCIA Nederland B.V.          Wassenaarweg 40          NL-6843 NW ARNHEM          Tel.: +31 26 320 12 30          Fax: +31 26 320 12 39          E-mail: info@scia.net</p>	<p><b>Switzerland</b></p> <p>SCIA Swiss Office          Dürenbergstrasse 24          CH-3212 Gurmels          Tel.: +41 26 341 74 11          Fax: +41 26 341 74 13          E-mail: info@scia.ch</p>
<p><b>Czech Republic</b></p> <p>SCIA CZ s.r.o. Praha          Evropská 2591/33d          160 00 Praha 6          Tel.: +420 226 205 600          Fax: +420 226 201 673          E-mail: info.praha@scia.cz</p> <p>SCIA CZ s.r.o. Brno          Slavickova 827/1a          638 00 Brno          Tel.: +420 530 501 570          Fax: +420 226 201 673          E-mail: info.brno@scia.cz</p>	<p><b>Slovakia</b></p> <p>SCIA SK s.r.o.          Murgašova 1298/16          SK-010 01 Žilina          Tel.: +421 415 003 070          Fax: +421 415 003 072          E-mail: info@scia.sk</p>

<p><b>Austria</b></p> <p>SCIA Datenservice Ges.m.b.H. Dresdnerstrasse 68/2/6/9 A-1200 WIEN Tel.: +43 1 7433232-11 Fax: +43 1 7433232-20 E-mail: info@scia.at</p> <p>Support Tel.: +43 1 7433232-12 E-mail: support@scia.net</p>	<p><b>Germany</b></p> <p>SCIA Software GmbH Technologie Zentrum Dortmund, Emil-Figge-Strasse 76-80 D-44227 Dortmund Tel.: +49 231/9742586 Fax: +49 231/9742587 E-mail: info@scia.de</p>
---	---

All information in this document is subject to modification without prior notice. No part of this manual may be reproduced, stored in a database or retrieval system or published, in any form or in any way, electronically, mechanically, by print, photo print, microfilm or any other means without prior written permission from the publisher. SCIA is not responsible for any direct or indirect damage because of imperfections in the documentation and/or the software.

© Copyright 2016 SCIA nv. All rights reserved.

Document created: 16/11/2016

SCIA Engineer 16.1

# 1. Introduction

## 1.1 Welcome



This manual explains step by step how to install SCIA Engineer and how to activate an “individual license” (with a USB key). This individual license will be referred to as “standalone” license”.

SCIA Engineer is a calculation program which is designed for Windows operating systems. It has a large range of applications: from the check of simple frames to the advanced design of complex projects in steel, concrete, wood, etc.

The program handles the calculation of 2D/3D frames, including the profile check and the connection check for steel constructions. Apart from frames, it is also possible to model and analyze plate structures, including advanced concrete calculations.

This manual describes the procedures for a correct installation of the application with a standalone protection

The final two chapters include the procedure for uninstalling the software (Chapter 3) and a guide for troubleshooting common issues. (Chapter 4).

## 1.2 System Requirements

To install SCIA Engineer it is recommended that your system meets the following requirements:

### Hardware

Processor	Minimum: Intel Core2Duo or AMD equivalent (Advised: Intel Core-i5 or AMD equivalent)
RAM	2 GB (Advised: > 4 GB)
Graphics Controller	256 MB, supporting OpenGL
Free disk space	5GB
Minimum resolution	1280 x 800

## Software

Supported Windows OS	Windows 2008 server 64 bit Windows 2012 server 64 bit Windows 7 32/64 bit Windows 8.1 32/64 bit Windows 10 32/64 bit
API link with Revit ( <a href="http://www.scia.net/revit">http://www.scia.net/revit</a> )	Scia Engineer 16 is compatible with: Revit 2012, Revit 2013, Revit 2014, Revit 2015, Revit 2016, Revit 2017
API link with Tekla	Scia Engineer 16 is compatible with: 32/64 bit versions of Tekla Structures 15, Tekla Structures 16, Tekla Structures 17, Tekla Structures 18, Tekla Structures 19, Tekla Structures 20, Tekla Structures 21.0, Tekla Structures 21.1, Tekla Structures 2016
Etabs	Scia Engineer 16 is compatible with: Etabs 9.2
IFC	Scia Engineer 16 is compatible with: IFC version 2x3
SDNF	Scia Engineer 16 is compatible with: SDNF version 2.0 SDNF version 3.0

## 2. Standalone installation

### 2.1 Installation of SCIA Engineer

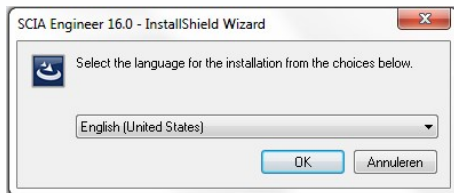
1. You can start the installation using the web setup from our site:

Go to our download page:

<http://www.scia.net/en/scia-engineer-setup>

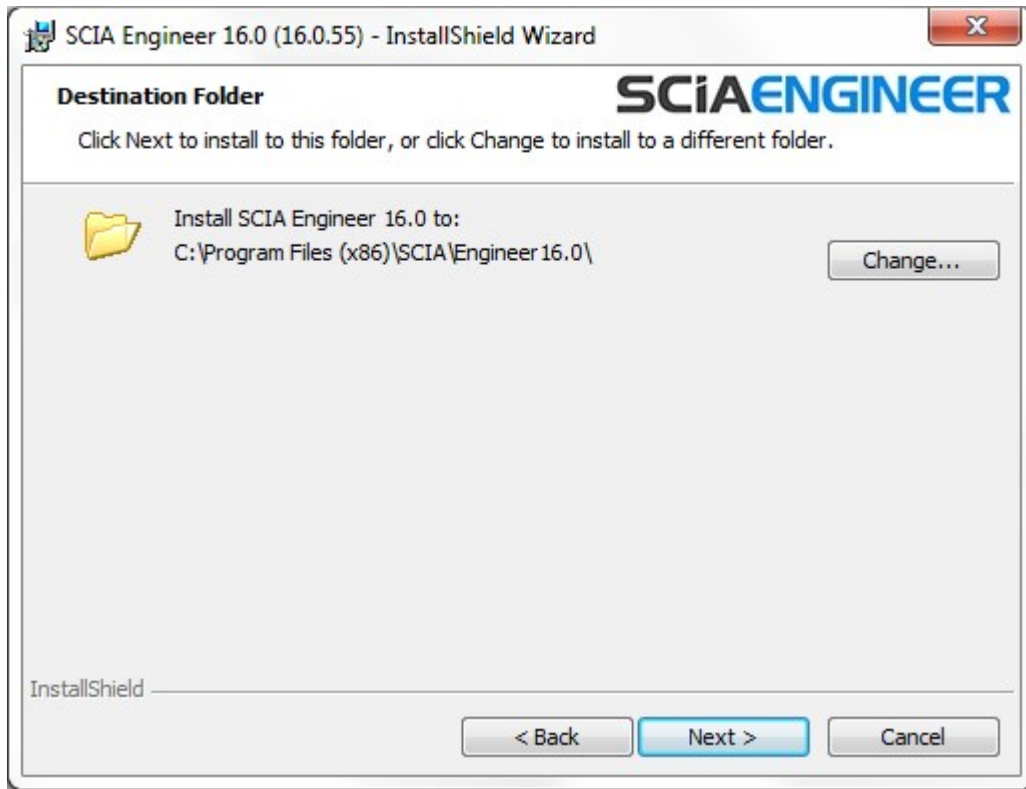
And run the web setup.

2. In the dialog box which appears, select the language for installation:



The language chosen for installation is also the default language that will be used for the help files of SCIA Engineer.

3. The Welcome screen for installation appears. Press [Next] to continue.
4. In the dialog Customer Information, the User Name and Company Name can be input. The Company Name will appear automatically in the document of SCIA Engineer. Press [Next] to continue.
5. In the dialog Choose Destination Location, the folder where the files will be installed can be specified. By default the destination folder is created in Program Files. It is advised to use this default location.



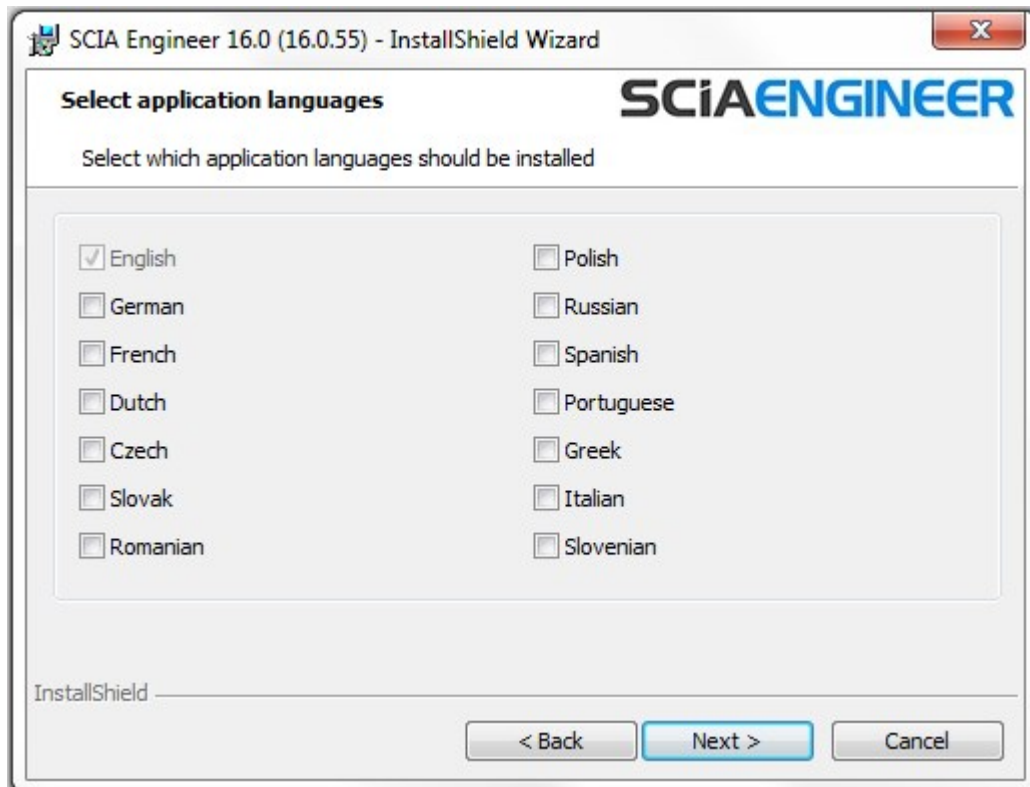
Press [Next] to continue.

6. In the dialog Setup Type the preferred setup can be chosen. Press [Next] continue. We advise to choose Custom so that you can check the add-ons that will or won't be installed by default. Make sure that ALL required add-ons are selected to be installed. If you are not sure about a certain component, it is better to install it anyway.

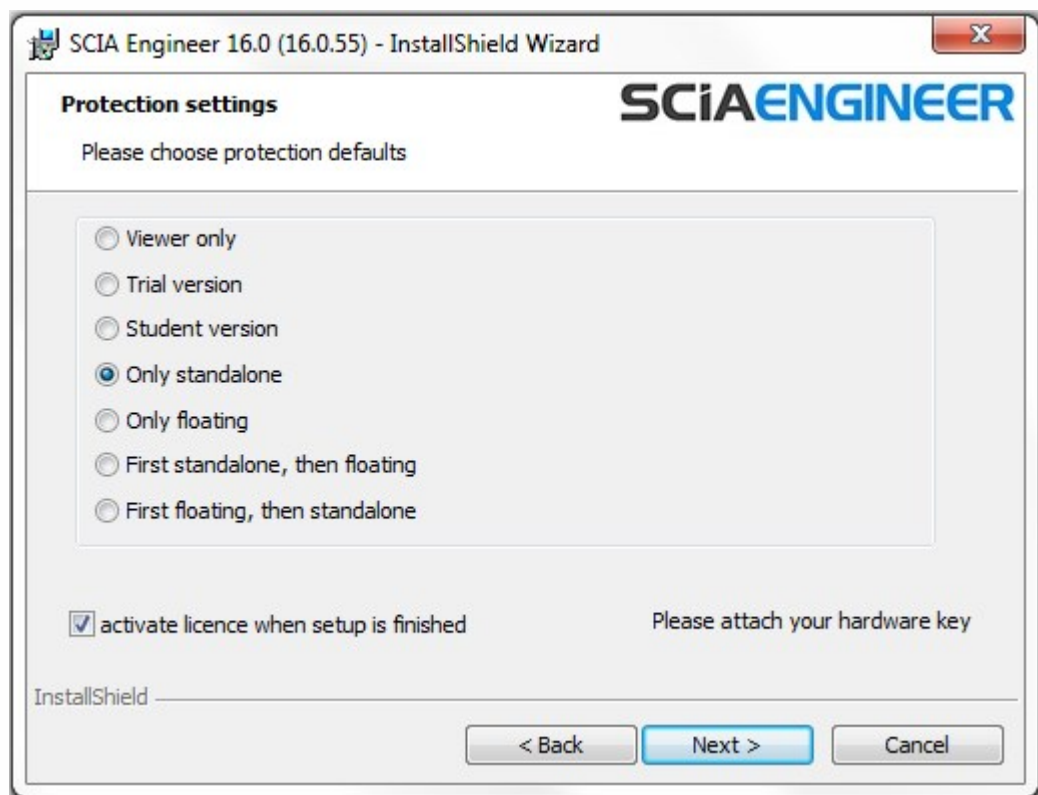
If you want to install one of the SCIA Engineer Plug-ins, then you need to select the plug-in in the Custom installation.

7. Select the application languages that should be installed (additional languages can only be used if you have the language module for it in your licence)





8. In the dialog Protection Settings the default values for the protection settings can be set.



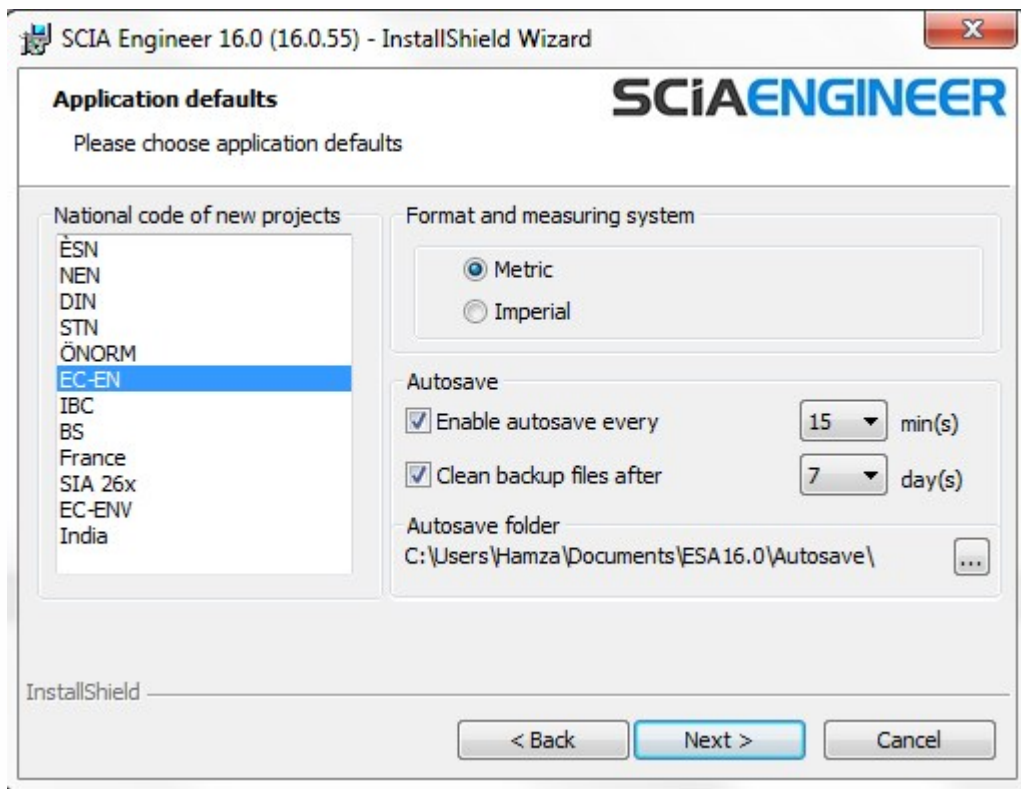
- Select Only standalone.

- Activate the option activate license when setup is finished. With this option the license file will be updated automatically if the dongle is attached to the computer.
- If you don't have your dongle attached to the computer, just install the program and deactivate the option activate license when setup is finished.

Press [Next] to continue.

When using a dongle and a FlexNET network license, the options "First standalone, then floating", or "First floating, then standalone" can be chosen.

9. In the dialog Application Defaults the default values for the national code can be set.



Autosave criteria can also be established and additionally, the autosave folder location can be modified.

Choose the default setting for your national code and measurement system. Press [Next] to continue.

10. The next window, allows the user to select the required desktop icons.
11. The last window shows an overview of the selected settings. Press [Install] to start the installation process.
12. After installation, the message appears that SCIA Engineer has been installed successfully. Press [Finish] to end the installation procedure.

## 2.2 Starting SCIA Engineer

Double click on the SCIA Engineer 16 symbol to start the program.

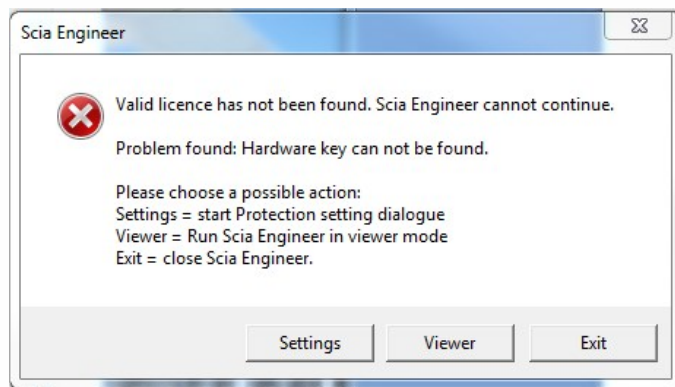


## 2.2.1 SCIA Engineer will start

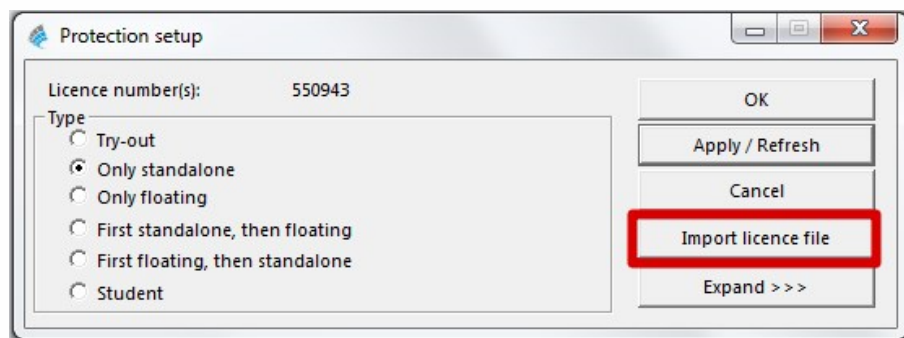
When the protection has been updated successfully, SCIA Engineer will start up and the installation is finished.

## 2.2.2 SCIA Engineer will not start immediately

If protection is not properly configured, the following screen will appear and the steps below have to be followed to update the protection:

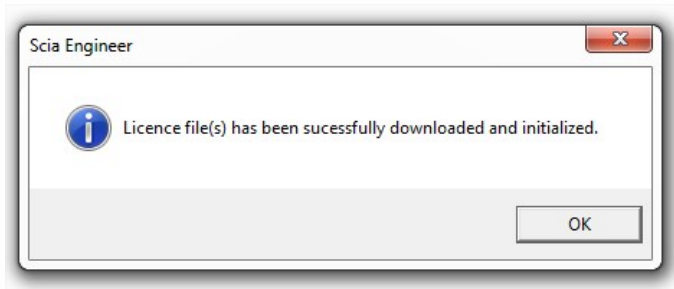


1. SCIA Engineer cannot start without proper protection. Press [Setup] to run the protection setup and update the protection.
2. The Protection setup will be displayed



Activate the option Only standalone and click on Import license file.

The license file will be downloaded automatically from the SCIA Protection server and the following message will appear:



Press [OK] again to close this message (if another message appears, then check chapter "4.2 Import license file is not possible" on page 16 for more information).

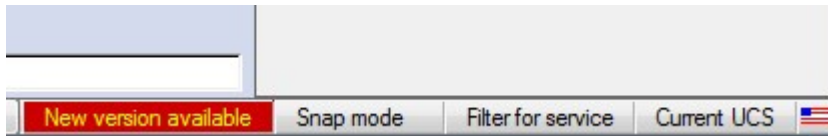
3. Once the license file has been successfully imported, the user can see the list of his commercial modules in the "Expand" mode of the Protection setup.
4. Press [OK] again to close the Protection setup.
5. Normally SCIA Engineer will start up automatically. If the program does not start, double click on the SCIA Engineer symbol to start the program.



6. When the protection update has finished SCIA Engineer will start up and the installation is finished.

### 2.2.3 Update

When an update is available, you will see a notification at the bottom right corner of SCIA Engineer itself:



When you click on New version available you can choose "Install update" and the updates will be installed automatically.

In SCIA Engineer it is also possible to check if an update is available, using Help -> Check for update in SCIA Engineer.

It is also possible to disable this option in the registry on the client's computer by navigating to:

HKEY\_CURRENT\_USER\Software\SCIA\Esa\xx.x\Admin\Settings\EnableUpdateMenu

and setting the value here to: 0

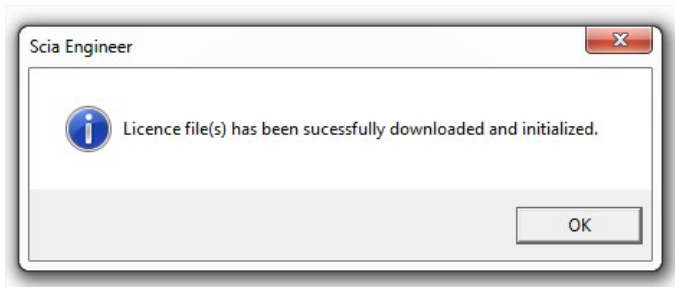
## 2.3 Upgrade of dongle

An update of the standalone protection means the replacement of the license file. This update is necessary if:

- a. a new version/patch of SCIA Engineer will be installed
- b. the number of licenses for individual modules has changed
- c. new modules have been purchased

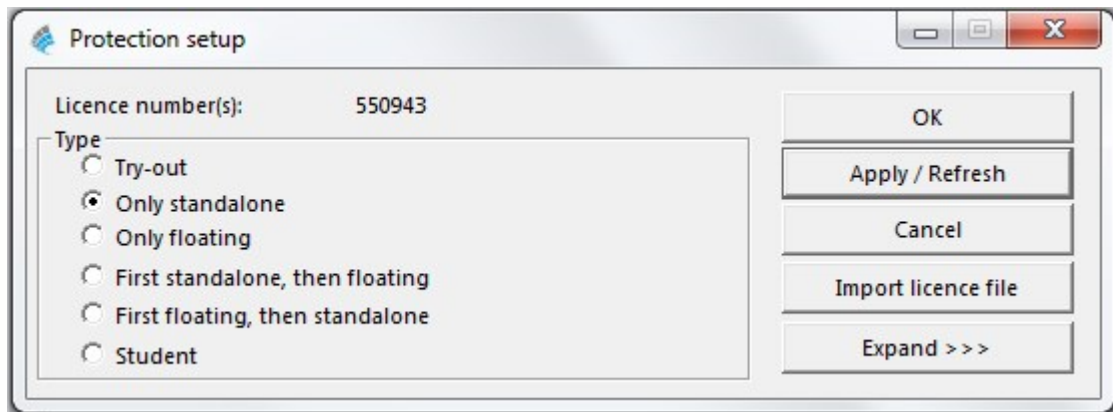
To update the license file:

1. Open the protection setup (in Windows at “Start > All programs > SCIA Engineer 16 > Protection setup”)
2. Click [Import license file] in the Protection setup dialogue.
3. The following message will appear after successful update of License file.



## 2.4 Using more the one dongle on a computer

It is possible to use as many dongles as can be attached to the computer together. The LockID number of all attached dongles are displayed in the protection setup dialogue:



The list of available commercial modules will display the sum of modules from the LIC files related to all attached dongles. Finally the sum of modules from the LIC files related to all attached dongles can be used in SCIA Engineer.



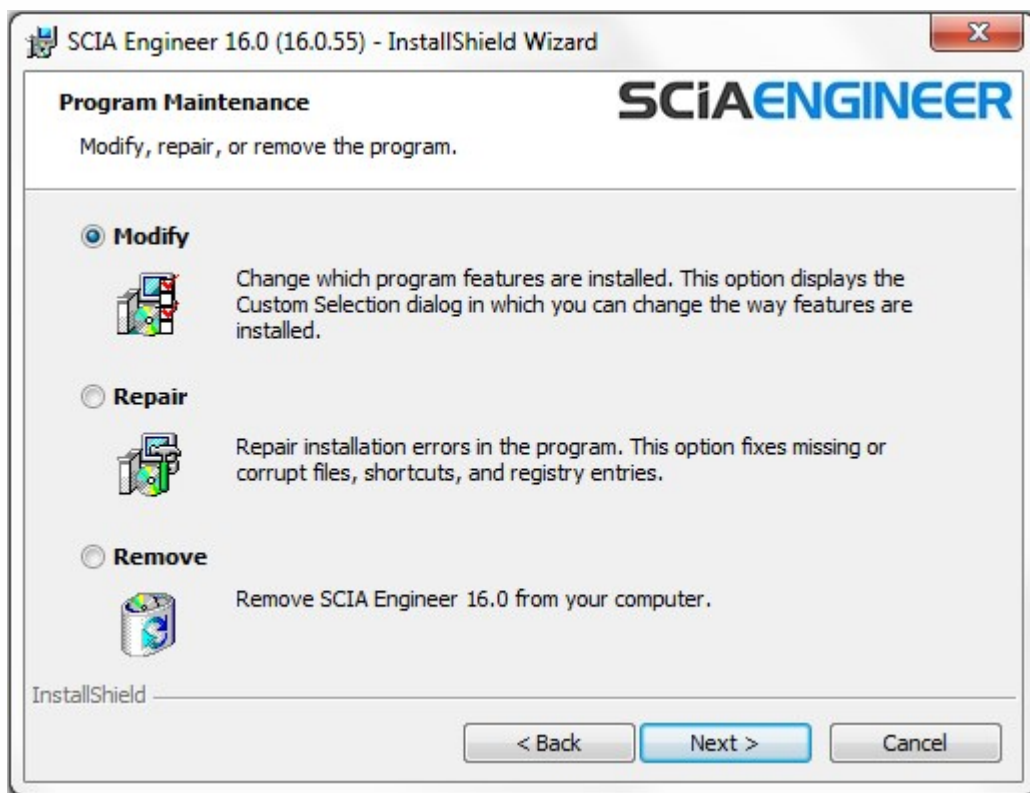
[Import license file] can be done with multiple attached dongles. It is possible to use multiple dongles with different time limitations. In the case that a certain commercial module is in available in multiple license files, then the one with longest time limitation is taken into account.

## 3. Uninstalling SCIA Engineer

### 3.1 Uninstalling with Add/Remove Programs in Windows

Scia Engineer can be uninstalled like any other windows based software application:

1. Go to Add or Remove Programs through Start > Settings > Control Panel > Add or Remove Programs.
2. A list with installed software applications will appear. Select Scia Engineer and press [Change/Remove]
3. In the dialog box that appears choose the option Remove



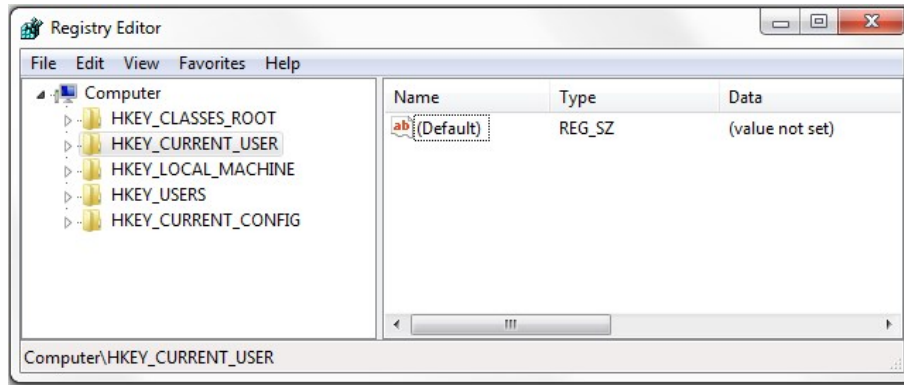
4. Press [Next] to start the uninstall procedure.

After completing the uninstallation, some settings remain in the Registry of windows. These traces can be deleted manually. Deleting these entries can be necessary when problems occur with a new installation.

1. Open the Run dialog box through Start > Run
2. Type regedit and press [OK]

Take note, for this step it is required to have Administrator rights!

3. The Registry Editor appears.



4. Go to the following key's and delete them using the Delete button.

HKEY\_CURRENT\_USER\Software\SCIA\ESA\*

HKEY\_LOCAL\_MACHINE\Software\SCIA\ESA\*

Where \* represents the version number.

5. Close the Registry Editor through File > Exit

After completing the uninstallation, some folders remain on your hard disk and can be deleted manually:

**32 bits computer:** C:\Program Files\SCIA\Engineer\*\*

**64 bits computer:** C:\Program Files (x86)\SCIA\Engineer\*\*

Also the following folders remain on your hard disk and can be deleted:

**Windows 7/8:** C:\Users\#User#\Esa\*\*

C:\Users\#User#\Documents\Esa\*\*

Where \*\* represents the version number



These folders can be deleted using Windows Explorer. Please note that the first folder can contain projects so the user must be absolutely sure if he/she wishes to delete these folders.

## 3.2 Uninstalling without Add/Remove Programs

Sometimes Scia Engineer cannot be uninstalled using the “Add/Remove programs” feature of Windows. Sometimes an error message presents itself or Scia Engineer is not added to Add/Remove Programs. In this case, it is not possible to uninstall the software.

This problem can occur with any Windows based program.

To easily uninstall Scia Engineer, use the following procedure:

Go to Start > Run and in the dialog that appears, type the following command:

```
msiexec /x {A39DB31A-4752-4611-A2F9-299324BED8EF}
```

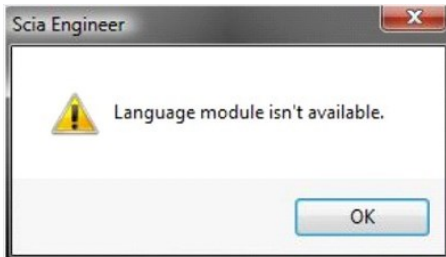
This will execute the same procedures as uninstalling through Add/Remove Programs.

## 4. Troubleshooting

A complete list of Frequent Asked Questions can be found on our website: <http://scia.net/en/support/faq>

### 4.1 Language module not found

When starting up SCIA Engineer the following message appears:



If this message appears, it means that SCIA Engineer does not find the correct language to start.

To use a certain language, you need the module for this language and the language must be installed. It is possible that you have chosen a different language during your installation than the language of your modules.

You can install an extra language in the setup for "Programs and Features" in Windows. Select the SCIA Engineer version from the list and choose for "Change". With this option you can change the installation of the program and select an extra language which will be installed.

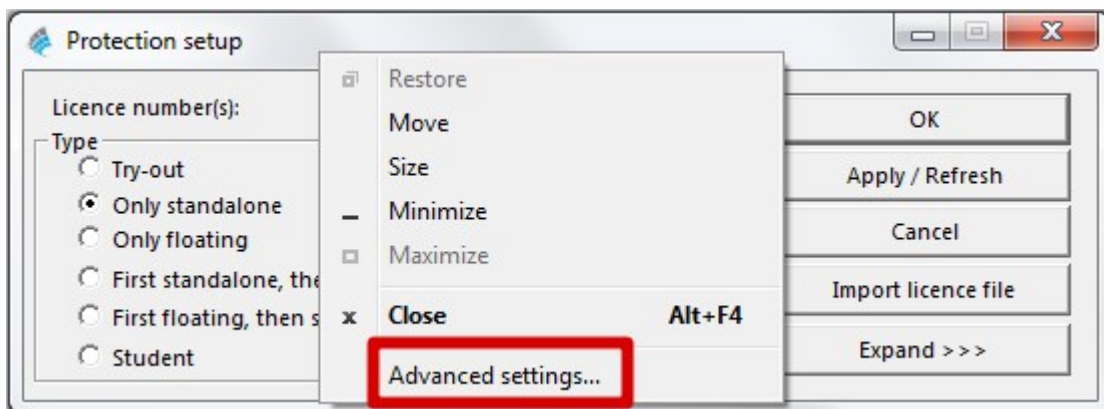
### 4.2 Import license file is not possible

With the option "Important license file" the Protection setup will search for your file on the internet via TCP port 80 and copy this into a folder on the computer.

Automatic import of the LIC file from the SCIA protection server is possible when the dongle is attached to the computer and when internet connection is available.

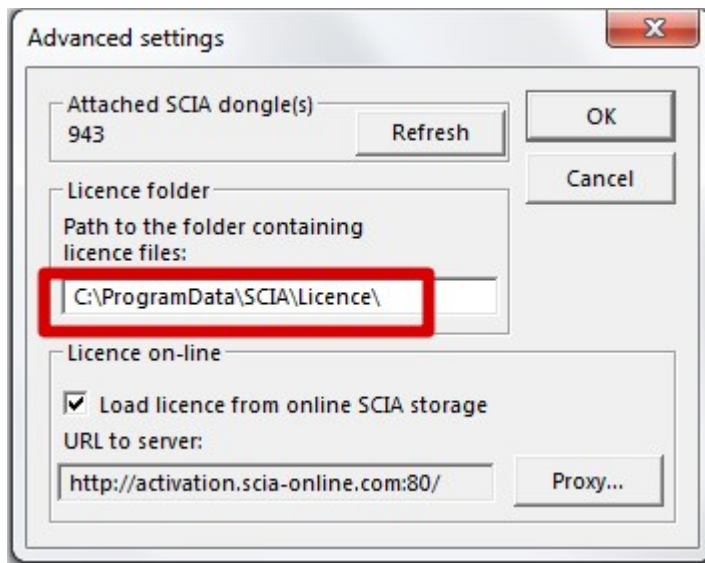
Importing the LIC file can be done only if the user has writing rights on the installation folder for the license file.

It is possible to change the path to the folder where the license file will be imported by right-mouse button clicking on the header of Protection setup dialogue:



Choose here for [Advanced settings...]





And here the path to the folder containing the license file can be adapted.

When using an edition and dynamic packet of SCIA Engineer you will find next to the SCIAxx.lic-file also a SCIAxx.e2c-file. In this case you have to make sure that both files are stored in the same folder when importing the license file.

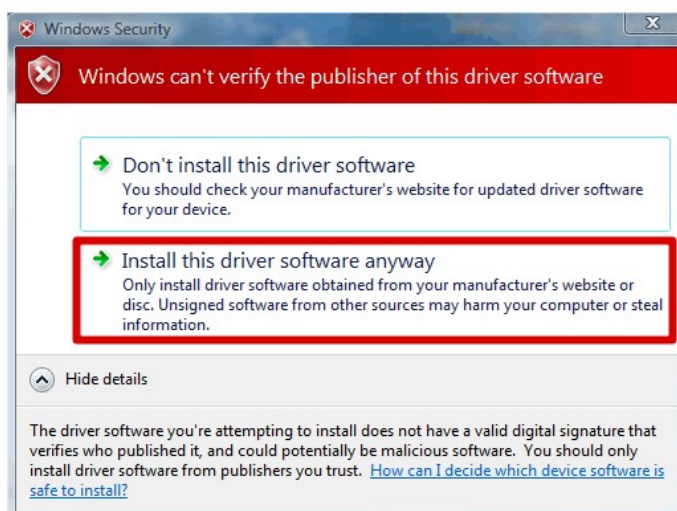
With the option “Import license file”, the Protection Setup will make a copy of your license file and copy it into the folder described above. By default this folder is: C:\ProgramData\SCIA\Engineer\Licence\

If the protection setup gives an error message when clicking on “Import license file”, you can copy the license file into this folder manually. After clicking on “Apply/Refresh” the licenses will be found and you can work with SCIA Engineer 15.

If you don't have your latest license file, you can send us an email on [support@scia.net](mailto:support@scia.net) to ask for your license files and we will send the files to you.

## 4.3 User Access Control

If UAC (User Access Control) is enabled the following message will appear at the end of the installation:



Choose “Install this driver software anyway” to end the installation.



For using SCIA Engineer, standard user rights suffice. Here, no Administrator rights are needed. However, the user must have read/write permission for the user folder of SCIA Engineer: Windows 7/8: C:\USERS\#USER#\ESA\*\* Where \*\* represents the version number and #USER# represents the user login name.