

# SCiAENGINEER



## Installation Guide

Student Installation

---

---

<b>Contacts</b> .....	<b>3</b>
<b>1. Introduction</b> .....	<b>5</b>
1.1 Welcome .....	5
1.2 System Requirements .....	5
Hardware .....	5
Software .....	6
<b>2. Installation of SCIA Engineer</b> .....	<b>7</b>
2.1 Removing of old protection services .....	7
2.2 Installation of SCIA Engineer .....	7
2.3 Activation of the FlexNET Network Student protection .....	10
<b>3. Uninstalling SCIA Engineer</b> .....	<b>13</b>
3.1 Uninstalling with Add/Remove Programs in Windows .....	13
3.2 Uninstalling without Add/Remove Programs .....	14
<b>4. Troubleshoot</b> .....	<b>15</b>
4.1 The message: "no license found" appears .....	15
4.2 Imadmin does not start automatically .....	17
4.3 User Access Control .....	19

# Contacts

<p><b>Belgium Headquarters</b></p> <p>SCIA nv          Industrieweg 1007          B-3540 Herk-de-Stad          Tel: +32 13 55 17 75          E-mail: info@scia.net</p> <p>Support Phone          CAE (SCIA Engineer)          Tel: +32 13 55 09 90</p> <p>CAD (Allplan)          Tel: +32 13 55 09 80</p> <p>Support E-mail:          support@scia.net</p>	<p><b>France</b></p> <p>SCIA France sarl          Centre d'Affaires          29, Grand' Rue          FR-59100 Roubaix          Tel.: +33 3.28.33.28.67          Fax: +33 3.28.33.28.69          E-mail: france@scia.net</p> <p>Agence commerciale          8, Place des vins de france          FR-75012 Paris          Tel.: +33 3.28.33.28.67          Fax: +33 3.28.33.28.69          E-mail: france@scia.net</p>
<p><b>Brazil</b></p> <p>SCIA do Brasil Software Ltda          Rua Dr. Luiz Migliano, 1986 - sala 702 , CEP          SP 05711-001 São Paulo          Tel.: +55 11 4314-5880          E-mail: brasil@scia.net</p>	<p><b>USA</b></p> <p>SCIA North America          7150 Riverwood Drive          21046 Columbia, MD          Tel.: +1 443-542-0638          Fax: +1 410-290-8050          E-mail: usa@scia.net</p>
<p><b>Netherlands</b></p> <p>SCIA Nederland B.V.          Wassenaarweg 40          NL-6843 NW ARNHEM          Tel.: +31 26 320 12 30          Fax: +31 26 320 12 39          E-mail: info@scia.net</p>	<p><b>Switzerland</b></p> <p>SCIA Swiss Office          Dürenbergstrasse 24          CH-3212 Gurmels          Tel.: +41 26 341 74 11          Fax: +41 26 341 74 13          E-mail: info@scia.ch</p>
<p><b>Czech Republic</b></p> <p>SCIA CZ s.r.o. Praha          Evropská 2591/33d          160 00 Praha 6          Tel.: +420 226 205 600          Fax: +420 226 201 673          E-mail: info.praha@scia.cz</p> <p>SCIA CZ s.r.o. Brno          Slavickova 827/1a          638 00 Brno          Tel.: +420 530 501 570          Fax: +420 226 201 673          E-mail: info.brno@scia.cz</p>	<p><b>Slovakia</b></p> <p>SCIA SK s.r.o.          Murgašova 1298/16          SK-010 01 Žilina          Tel.: +421 415 003 070          Fax: +421 415 003 072          E-mail: info@scia.sk</p>

<p><b>Austria</b></p> <p>SCIA Datenservice Ges.m.b.H. Dresdnerstrasse 68/2/6/9 A-1200 WIEN Tel.: +43 1 7433232-11 Fax: +43 1 7433232-20 E-mail: info@scia.at</p> <p>Support Tel.: +43 1 7433232-12 E-mail: support@scia.net</p>	<p><b>Germany</b></p> <p>SCIA Software GmbH Technologie Zentrum Dortmund, Emil-Figge-Strasse 76-80 D-44227 Dortmund Tel.: +49 231/9742586 Fax: +49 231/9742587 E-mail: info@scia.de</p>
---	---

All information in this document is subject to modification without prior notice. No part of this manual may be reproduced, stored in a database or retrieval system or published, in any form or in any way, electronically, mechanically, by print, photo print, microfilm or any other means without prior written permission from the publisher. SCIA is not responsible for any direct or indirect damage because of imperfections in the documentation and/or the software.

© Copyright 2016 SCIA nv. All rights reserved.

Document created: 16/11/2016

SCIA Engineer 16.1

# 1. Introduction

## 1.1 Welcome

Welcome to the SCIA Engineer Installation Guide. SCIA Engineer is a structural analysis and design program running under Windows 7 & Windows 8. It has a large range of applications: from the check of simple frames to the advanced design of complex projects in steel, concrete, wood, etc.

The program handles the calculation of 2D/3D frames, including the profile check and the connection check for steel constructions. Apart from frames, it is also possible to model and analyze plate structures, including advanced concrete calculations.

This manual describes the procedures for a correct installation of the application with a student license.

## 1.2 System Requirements

To install SCIA Engineer it is recommended that your system qualifies the following requirements:

### Hardware

Processor	Minimum: Intel Core2Duo or AMD equivalent (Advised: Intel Core-i5 or AMD equivalent)
RAM	2 GB (Advised: > 4 GB)
Graphics Controller	256 MB, supporting OpenGL
Free disk space	5GB
Minimum resolution	1280 x 800

## Software

Supported Windows OS	Windows 2008 server 64 bit Windows 2012 server 64 bit Windows 7 32/64 bit Windows 8.1 32/64 bit Windows 10 32/64 bit
API link with Revit ( <a href="http://www.scia.net/revit">http://www.scia.net/revit</a> )	Scia Engineer 16 is compatible with: Revit 2012, Revit 2013, Revit 2014, Revit 2015, Revit 2016, Revit 2017
API link with Tekla	Scia Engineer 16 is compatible with: 32/64 bit versions of Tekla Structures 15, Tekla Structures 16, Tekla Structures 17, Tekla Structures 18, Tekla Structures 19, Tekla Structures 20, Tekla Structures 21.0, Tekla Structures 21.1, Tekla Structures 2016
Etabs	Scia Engineer 16 is compatible with: Etabs 9.2
IFC	Scia Engineer 16 is compatible with: IFC version 2x3
SDNF	Scia Engineer 16 is compatible with: SDNF version 2.0 SDNF version 3.0

## 2. Installation of SCIA Engineer

This chapter describes the procedure to install a Student version of SCIA Engineer.

The installation procedure includes the following steps:

- Installation of SCIA Engineer
- Activation of the FlexNET Network Student protection

### 2.1 Removing of old protection services

If you have used SCIA Engineer in the past, then you need to remove the previous FlexNET protection software from your PC before continuing with the installation!

Before removing the old version of FlexNET, the license file has to be deactivated in SCIA Activation Manager via the button 'Return license'

This is due to the fact that SCIA Engineer 14 (and higher) requires the SCIA License server to be version 2.2.0 or higher. To uninstall, navigate to your software panel (in the control panel) and check the list for "SCIA License Server". If it is in the list, then check the version. If it's lower than 2.2.0, then remove it. A newer version will be installed during the installation of SCIA Engineer 16.

Name	Publisher	Installed On	Size	Version
SCIA Engineer 15.2	SCIA	17/12/2015	1,82 GB	15.2.122
Scia Engineer 15.3	SCIA	9/12/2015	2,05 GB	15.3.32
Scia Licence Server	Nemetschek Scia	2/05/2014	45,0 MB	2.2.3

### 2.2 Installation of SCIA Engineer

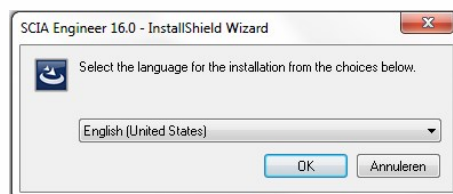
1. You can start the installation using the web setup from our site:

Go to our download page:

<http://www.scia.net/en/scia-engineer-setup>

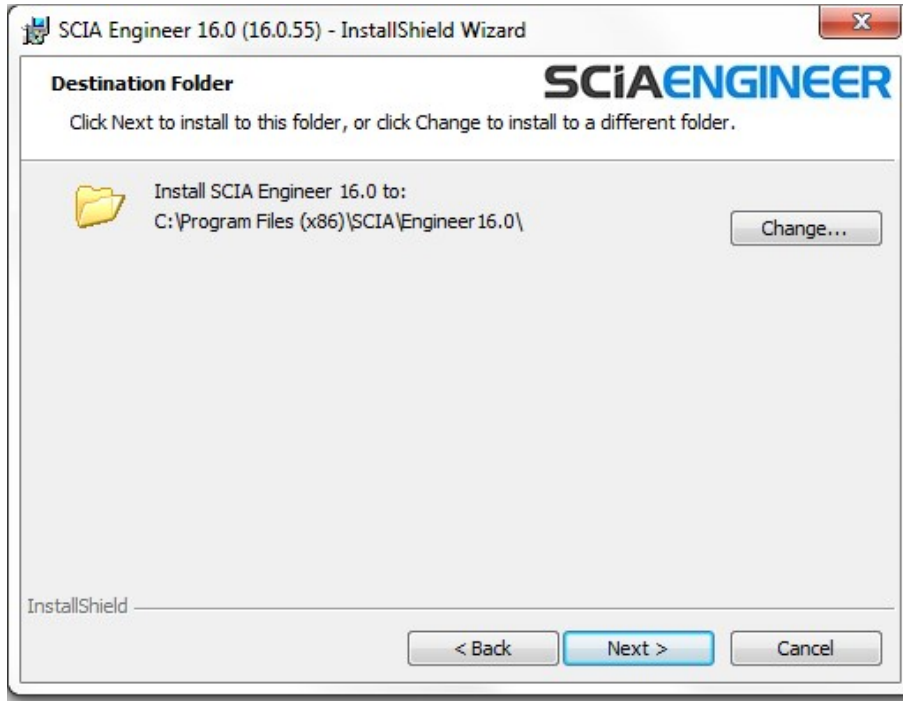
And run the web setup.

2. In the dialog box which appears, select the language for installation:



The language chosen for installation is also the default language that will be used for the help files of SCIA Engineer.

3. The Welcome screen for installation appears. Press [Next] to continue.
4. In the dialog Customer Information, the User Name and Company Name can be input. The Company Name will appear automatically in the document of SCIA Engineer. Press [Next] to continue.
5. In the dialog Choose Destination Location, the folder where the files will be installed can be specified. By default the destination folder is created in Program Files. It is advised to use this default location.



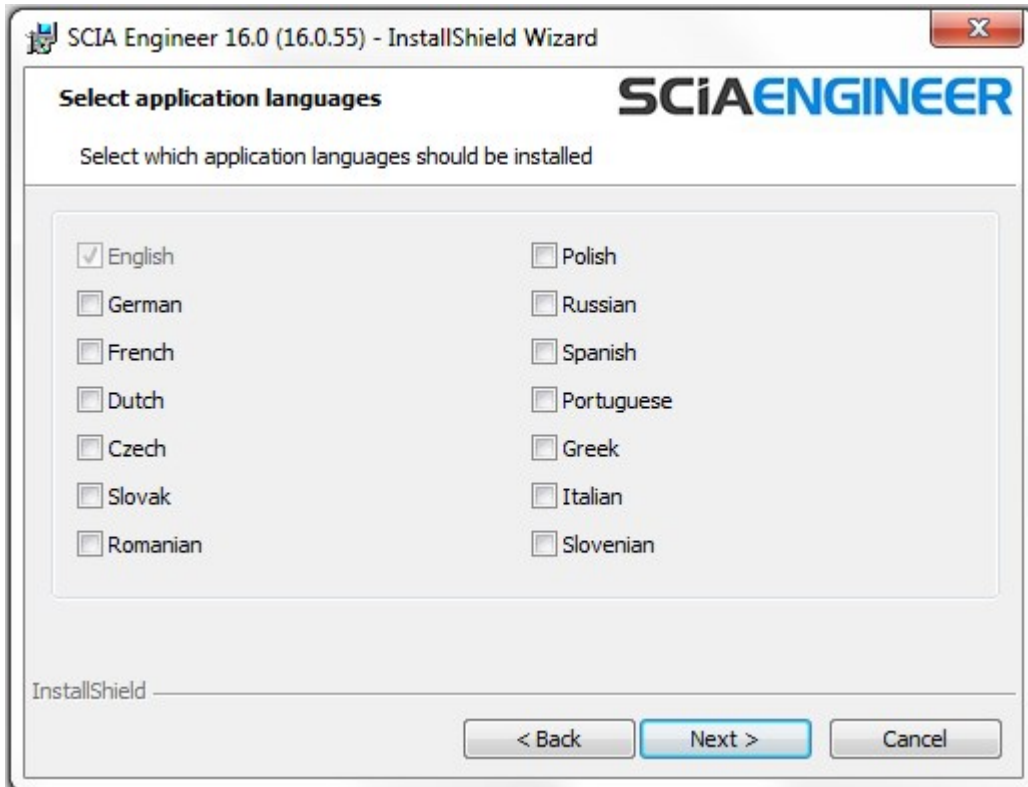
Press [Next] to continue.

6. In the dialog Setup Type the preferred setup can be chosen. Press [Next] continue. We advise to choose Custom so that you can check the add-ons that will or won't be installed by default. Make sure that ALL required add-ons are selected to be installed. If you are not sure about a certain component, it is better to install it anyway.

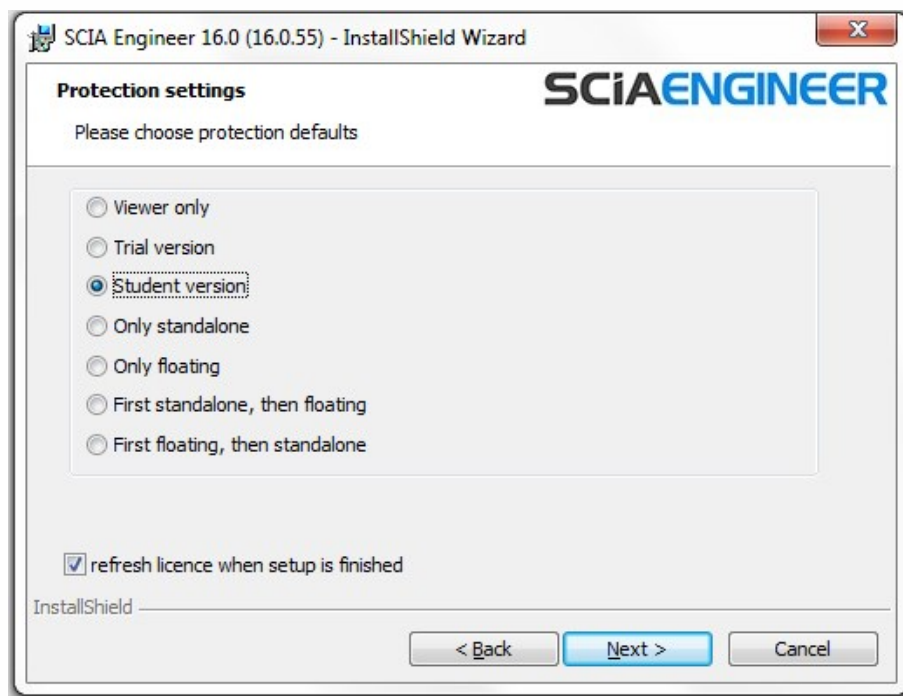
If you want to install one of the SCIA Engineer Plug-ins, then you need to select the plug-in in the Custom installation.

7. Select the application languages that should be installed (additional languages can only be used if you have the language module for it in your licence)





8. In the dialog Protection Defaults the default values for the protection settings can be set.

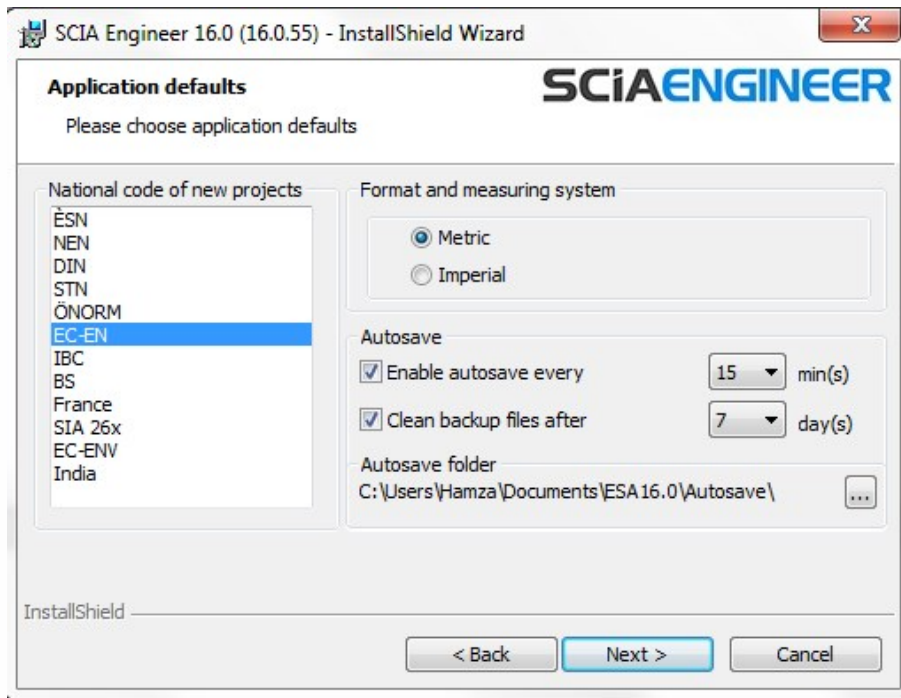


Select Student version.

Activate the option activate license when setup is finished. With this option the license file will be updated automatically if the dongle is attached to the computer.

Press [Next] to continue.

9. In the dialog Application Defaults the default values for the national code can be set.



Autosave criteria can also be established and additionally, the autosave folder location can be modified.

Choose the default setting for your national code and measurement system. Press [Next] to continue. The last window shows an overview of the selected settings. Press [Install] to start the installation process.

10. The next window, allows the user to select the required desktop icons.
11. The last window shows an overview of the selected settings. Press [Install] to start the installation process.
12. After installation, the message appears that SCIA Engineer has been installed successfully. Press [Finish] to end the installation procedure.

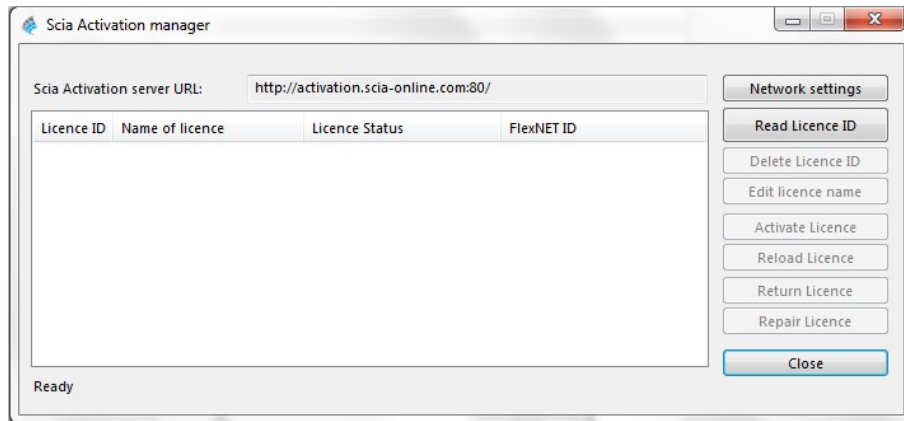
## 2.3 Activation of the FlexNET Network Student protection

1. Execute the SCIA Activation Manager

("C:\Program Files (x86)\Common Files\SCIA\LicenseServer\ActivationUtility\ActivationUtility.exe")

A shortcut to this application can be found on your desktop as Activation Manager

If you don't find the Activation Manager as indicate above, you can download it from our site: <http://scia.net/en/support/downloads/latest-version-flexnet>



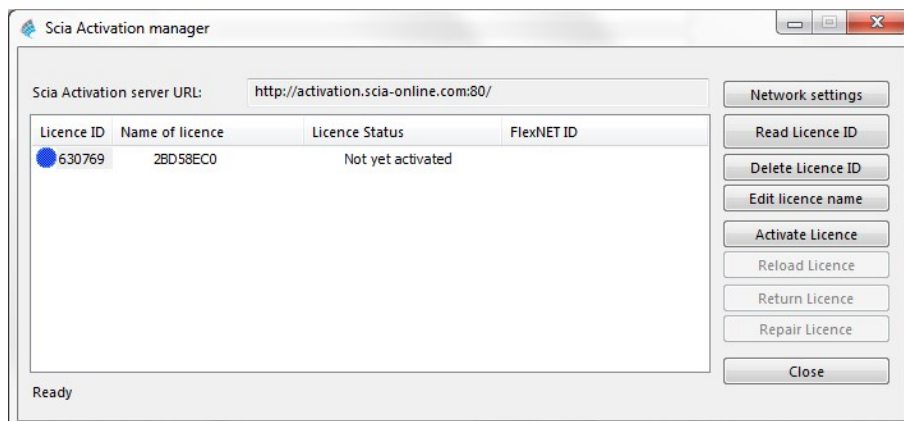
Press [Read Licence ID]

→ If you are using proxy settings, then configure Network Settings

The Lock ID is stored in a SCIAxxxxx.lid-file, where x represents the number of your license file. The file will be send to you by email.

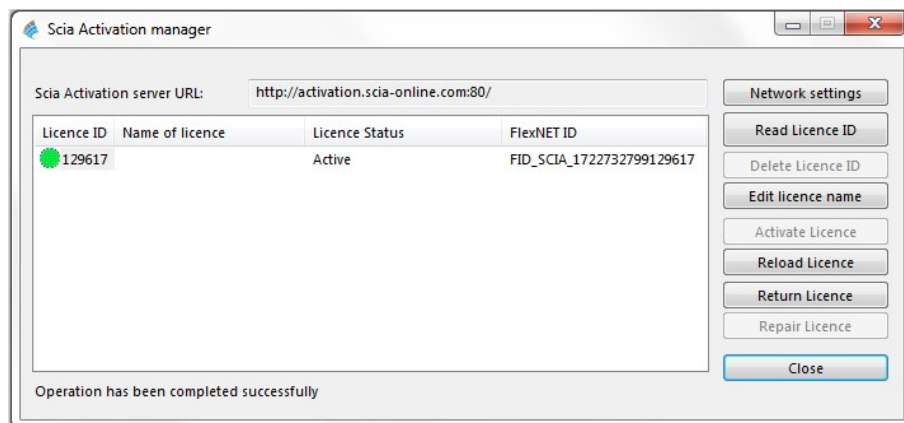
Select your lid-file and press [Open]

- The number of your license file will appear in the FlexNET activation utility window.



Select this number and press [Activate licence]

- The circle in front of the license number will become green and the license file has been activated.



Press [Close]



When using the license file on another computer, it is necessary to deactivate the license file from the previous PC.

Using Windows Explorer, go to the folder

C:\Program Files (x86)\Common Files\SCIA\LicenceServer\ActivationUtility\

ActivationUtility.exe

Execute the file ActivationUtility.exe

Select the License file number and press [Return License]

Press [Close]

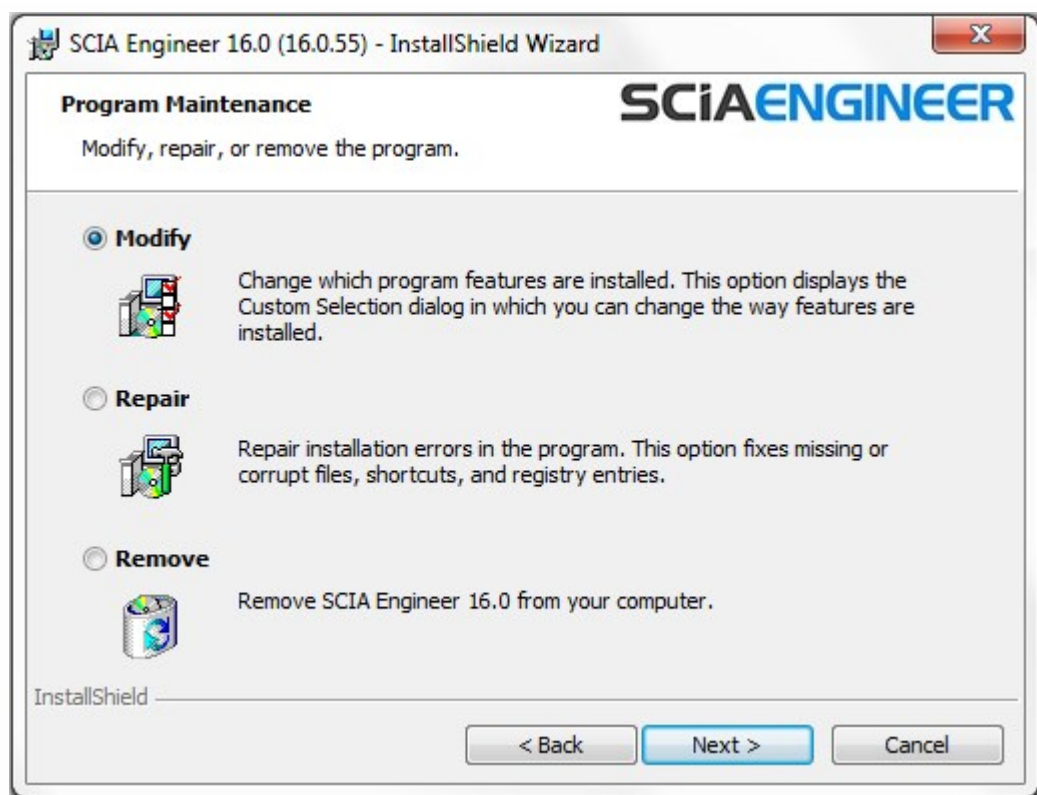
4. Now wait 10 minutes for the license to be loaded in by a background service (or you can restart your PC).
5. Now you are ready, start the installed SCIA Engineer.

## 3. Uninstalling SCIA Engineer

### 3.1 Uninstalling with Add/Remove Programs in Windows

Scia Engineer can be uninstalled like any other windows based software application:

1. Go to Add or Remove Programs through Start > Settings > Control Panel > Add or Remove Programs.
2. A list with installed software applications will appear. Select Scia Engineer and press [Change/Remove]
3. In the dialog box that appears choose the option Remove



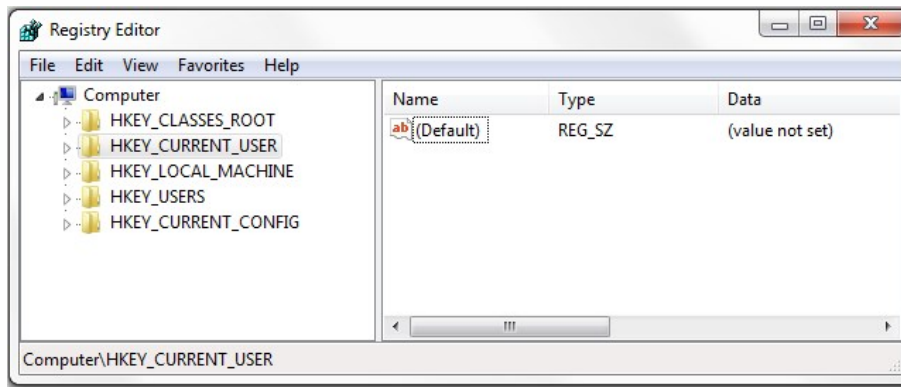
4. Press [Next] to start the uninstall procedure.

After completing the uninstallation, some settings remain in the Registry of windows. These traces can be deleted manually. Deleting these entries can be necessary when problems occur with a new installation.

1. Open the Run dialog box through Start > Run
2. Type regedit and press [OK]

Take note, for this step it is required to have Administrator rights!

3. The Registry Editor appears.



4. Go to the following key's and delete them using the Delete button.

HKEY\_CURRENT\_USER\Software\SCIA\ESA\*

HKEY\_LOCAL\_MACHINE\Software\SCIA\ESA\*

Where \* represents the version number.

5. Close the Registry Editor through File > Exit

After completing the uninstallation, some folders remain on your hard disk and can be deleted manually:

**32 bits computer:** C:\Program Files\SCIA\Engineer\*\*

**64 bits computer:** C:\Program Files (x86)\SCIA\Engineer\*\*

Also the following folders remain on your hard disk and can be deleted:

**Windows 7/8:** C:\Users#\User#\Esa\*\*

C:\Users#\User#\Documents\Esa\*\*

Where \*\* represents the version number



These folders can be deleted using Windows Explorer. Please note that the first folder can contain projects so the user must be absolutely sure if he/she wishes to delete these folders.

## 3.2 Uninstalling without Add/Remove Programs

Sometimes Scia Engineer cannot be uninstalled using the "Add/Remove programs" feature of Windows. Sometimes an error message presents itself or Scia Engineer is not added to Add/Remove Programs. In this case, it is not possible to uninstall the software.

This problem can occur with any Windows based program.

To easily uninstall Scia Engineer, use the following procedure:

Go to Start > Run and in the dialog that appears, type the following command:

```
msiexec/x {A39DB31A-4752-4611-A2F9-299324BED8EF}
```

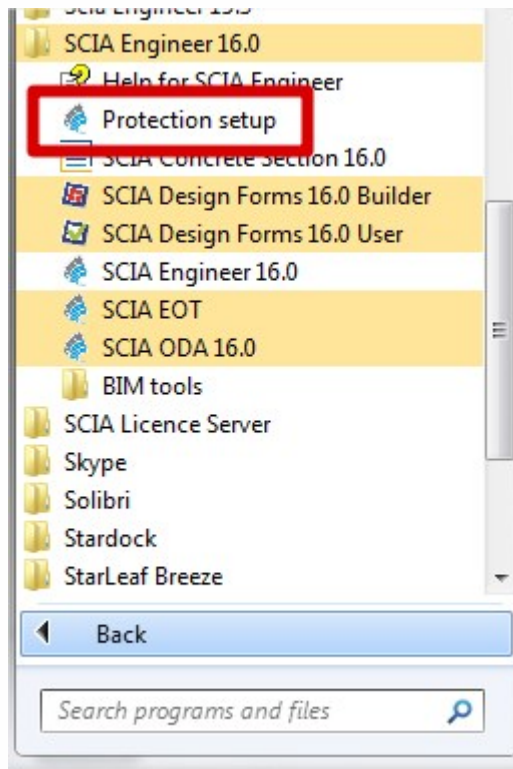
This will execute the same procedures as uninstalling through Add/Remove Programs.

## 4. Troubleshoot

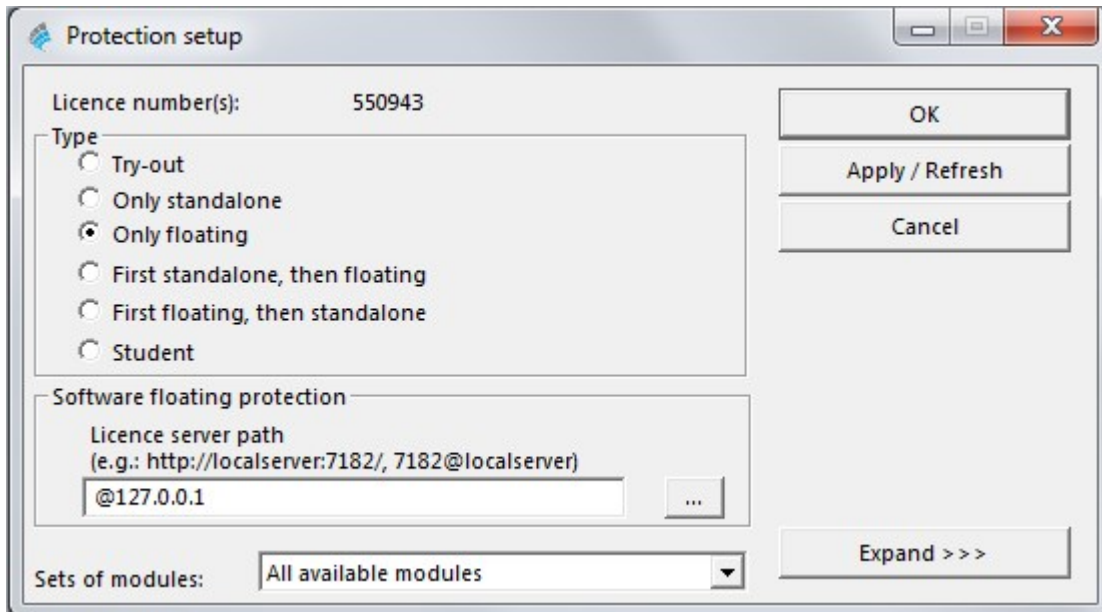
A complete list of Frequent Asked Questions can be found on our website: <http://scia.net/en/support/faq>

### 4.1 The message: “no license found” appears

Go to Start > all programs > Scia Engineer 16 > Protection setup



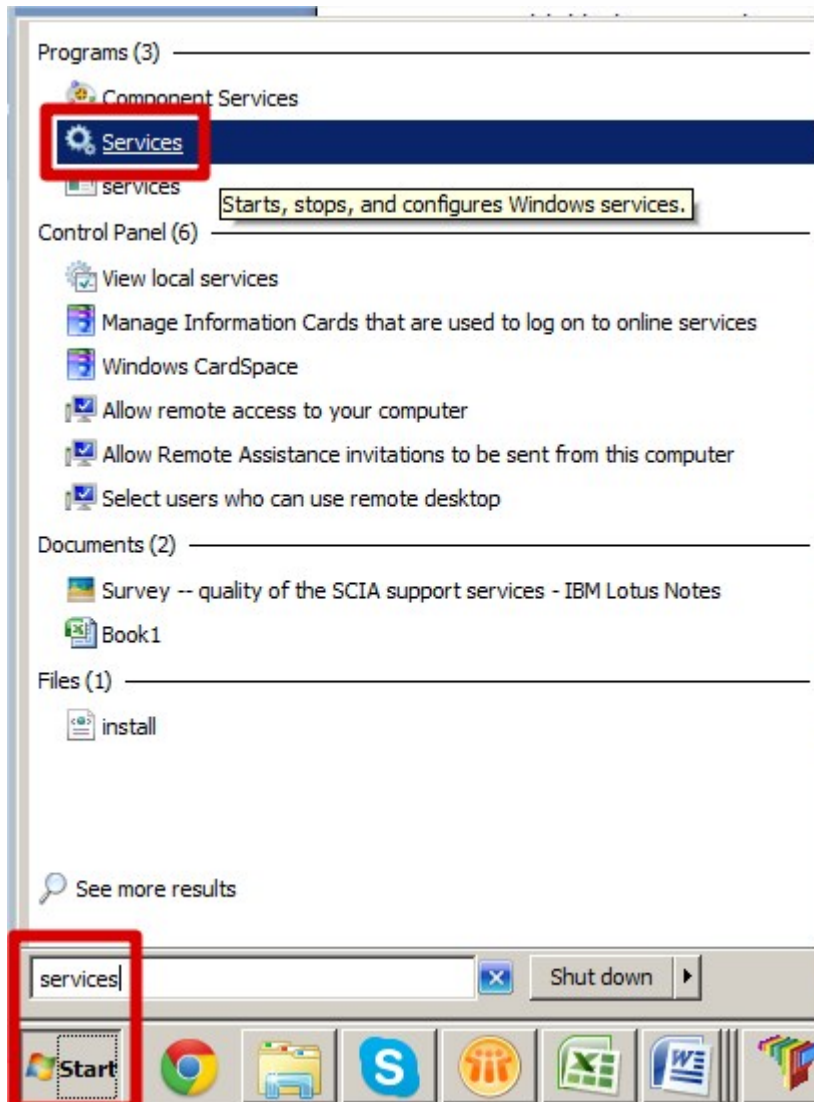
Then change the option "Type" to "Only floating" and the address to: @127.0.0.1 as shown below:



And click on OK.

If Scia Engineer still doesn't work after this change, please go to the services of Windows. You can do this by typing "Services" at the Start menu in Windows:



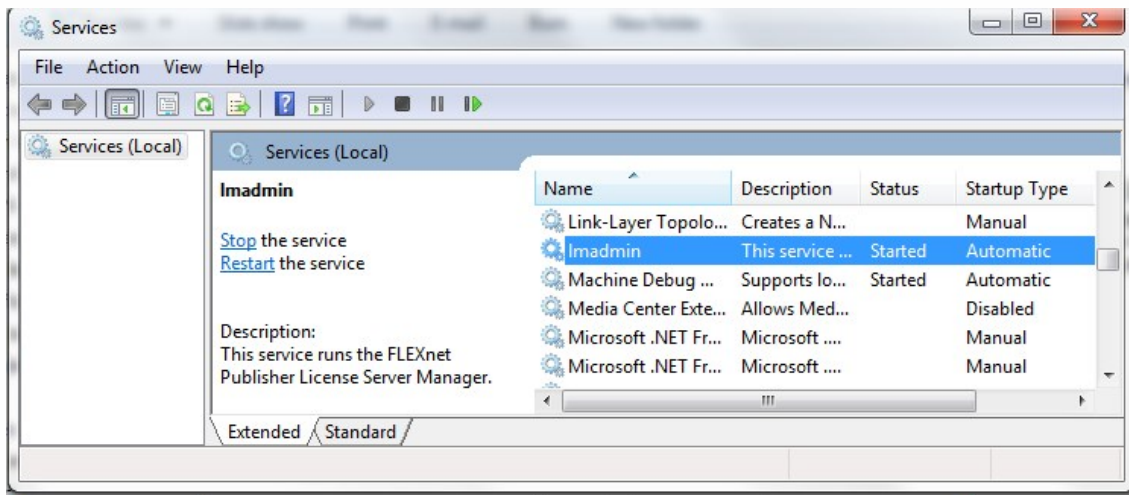


A list of Services will appear. Search for the service "ladmin" here. Stop this service and restart it.

Afterwards Scia Engineer 16 should start up. If this problem persists after restarting the computer, then check the next part "ladmin does not start automatically".

## 4.2 ladmin does not start automatically

When restarting the computer, the ladmin service should start up automatic.

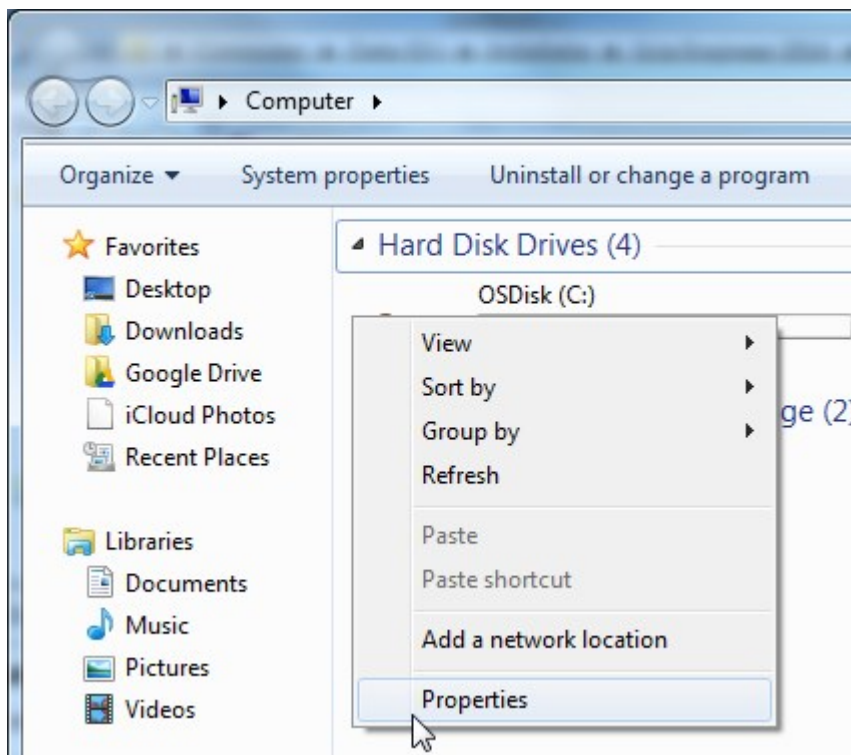


If this service does not start up automatically, please add a shortcut to Imadmin.exe (C:\Program Files (x86)\Common Files\Scia\LicenceServer\FlexNetServer) in the startup menu of Windows.

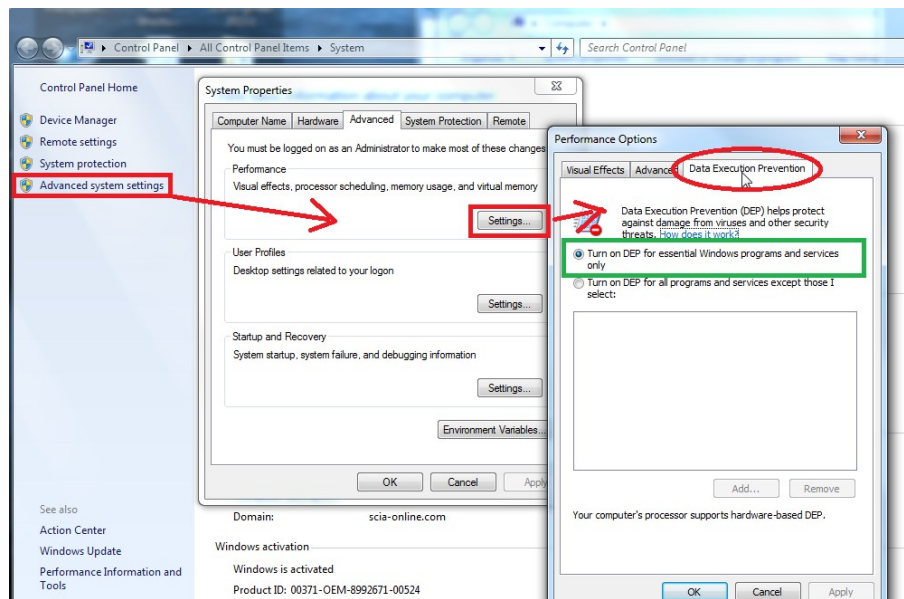
In some cases Imadmin.exe can be blocked due to other programs. The key in such a situation is to find what is blocking it.

One example is for some Windows Server operating systems. These operating systems sometimes have “Data Execution Prevention” activated by default for almost all programs. You can access and change it in the following manner:

Right Click on the C: drive to access the computer properties

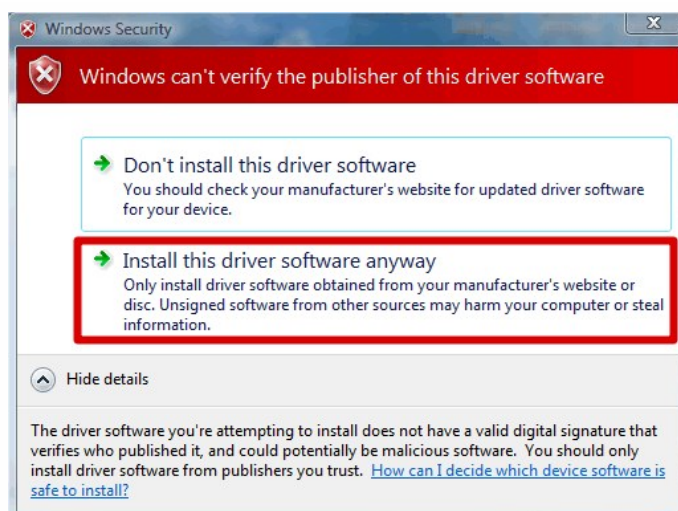


Then you can configure data execution prevention by following the steps indicated in the next image:



### 4.3 User Access Control

If UAC (User Access Control) is enabled the following message will appear at the end of the installation:



Choose “Install this driver software anyway” to end the installation.

For using SCIA Engineer, standard user rights suffice. Here, no Administrator rights are needed. However, the user must have read/write permission for the user folder of SCIA Engineer: Windows 7/8: C:\USERS\#USER#\ESA\*\* Where \*\* represents the version number and #USER# represents the user login name.