

SCIENGINEER



Barco One Campus - © Image Jaspers-Eyers Architects – photography by Marc Detiffe

Installation Guide

Updating Standalone Installation

Contacts	3
Step 1: Close all SCIA related software (SCIA Engineer, SCIA Concrete Section, etc.)	5
Step 2: Open the protection setup (through Windows “Start”)	6
Step 3: Select ‘Import license file’	7
Step 4: Something went wrong...	8
System could not find attached SCIA dongle	9
Description	9
Solution	9
Checks	10
System detected an error while loading your license file	10
Description	10
Solutions	10
Checks	12
Could not store license file to the license folder	12
Description	12
Solutions	12
Counter X by license file of counter Y (X>Y)	14
Description	14
Solutions	15
Checks	15
Your license file is not stored on SCIA server	15
Description	15
Solution	15
Checks	15

Contacts

<p>Belgium Headquarters</p> <p>SCIA nv Industrieweg 1007 B-3540 Herk-de-Stad Tel: +32 13 55 17 75 E-mail: info@scia.net</p> <p>Support Phone CAE (SCIA Engineer) Tel: +32 13 55 09 90</p> <p>CAD (Allplan) Tel: +32 13 55 09 80</p> <p>Support E-mail: support@scia.net</p>	<p>France</p> <p>SCIA France sarl Centre d'Affaires 29, Grand' Rue FR-59100 Roubaix Tel.: +33 3.28.33.28.67 Fax: +33 3.28.33.28.69 E-mail: france@scia.net</p> <p>Agence commerciale 8, Place des vins de france FR-75012 Paris Tel.: +33 3.28.33.28.67 Fax: +33 3.28.33.28.69 E-mail: france@scia.net</p>
<p>Brazil</p> <p>SCIA do Brasil Software Ltda Rua Dr. Luiz Migliano, 1986 - sala 702 , CEP SP 05711-001 São Paulo Tel.: +55 11 4314-5880 E-mail: brasil@scia.net</p>	<p>USA</p> <p>SCIA North America 7150 Riverwood Drive 21046 Columbia, MD Tel.: +1 443-542-0638 Fax: +1 410-290-8050 E-mail: usa@scia.net</p>
<p>Netherlands</p> <p>SCIA Nederland B.V. Wassenaarweg 40 NL-6843 NW ARNHEM Tel.: +31 26 320 12 30 Fax: +31 26 320 12 39 E-mail: info@scia.net</p>	<p>Switzerland</p> <p>SCIA Swiss Office Dürenbergstrasse 24 CH-3212 Gurmels Tel.: +41 26 341 74 11 Fax: +41 26 341 74 13 E-mail: info@scia.ch</p>
<p>Czech Republic</p> <p>SCIA CZ s.r.o. Praha Evropská 2591/33d 160 00 Praha 6 Tel.: +420 226 205 600 Fax: +420 226 201 673 E-mail: info.praha@scia.cz</p> <p>SCIA CZ s.r.o. Brno Slavickova 827/1a 638 00 Brno Tel.: +420 530 501 570 Fax: +420 226 201 673 E-mail: info.brno@scia.cz</p>	<p>Slovakia</p> <p>SCIA SK s.r.o. Murgašova 1298/16 SK-010 01 Žilina Tel.: +421 415 003 070 Fax: +421 415 003 072 E-mail: info@scia.sk</p>

<p>Austria</p> <p>SCIA Datenservice Ges.m.b.H. Dresdnerstrasse 68/2/6/9 A-1200 WIEN Tel.: +43 1 7433232-11 Fax: +43 1 7433232-20 E-mail: info@scia.at</p> <p>Support Tel.: +43 1 7433232-12 E-mail: support@scia.net</p>	<p>Germany</p> <p>SCIA Software GmbH Technologie Zentrum Dortmund, Emil-Figge-Strasse 76-80 D-44227 Dortmund Tel.: +49 231/9742586 Fax: +49 231/9742587 E-mail: info@scia.de</p>
---	---

All information in this document is subject to modification without prior notice. No part of this manual may be reproduced, stored in a database or retrieval system or published, in any form or in any way, electronically, mechanically, by print, photo print, microfilm or any other means without prior written permission from the publisher. SCIA is not responsible for any direct or indirect damage because of imperfections in the documentation and/or the software.

© Copyright 2017 SCIA nv. All rights reserved.

Document created: 18/07/2017

SCIA Engineer 17.0

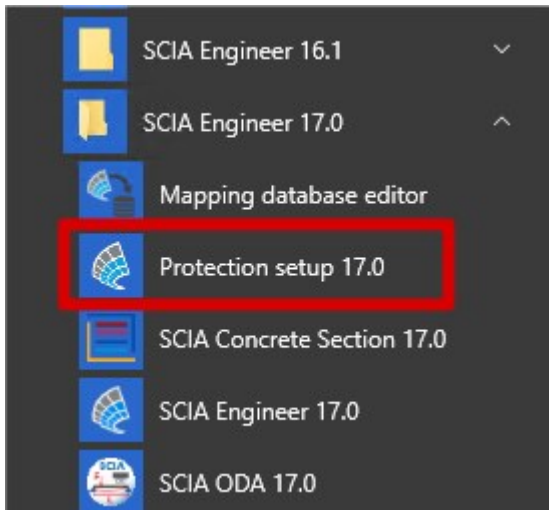
Step 1: Close all SCIA related software (SCIA Engineer, SCIA Concrete Section, etc.)

First close everything related to SCIA software. This can be SCIA Engineer, SCIA Concrete Section, or simply a message about no license being found.

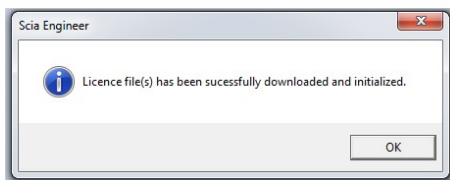
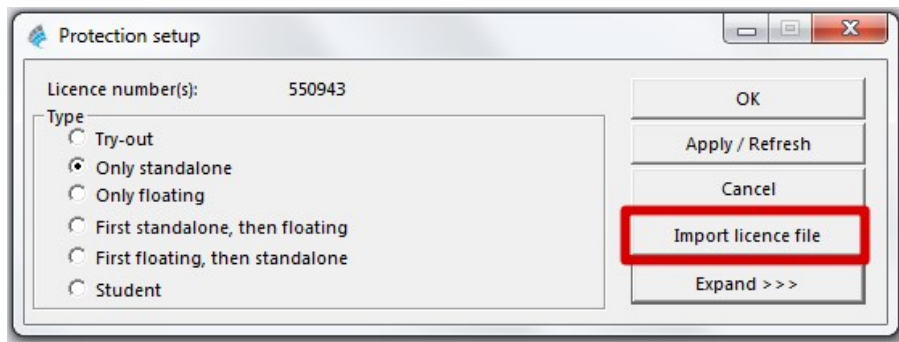
Step 2: Open the protection setup (through Windows “Start”)

Open the protection setup for the SCIA software you want to use.

In this case, it is SCIA Engineer 17:



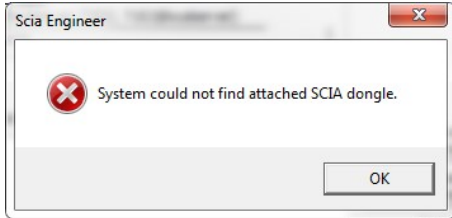
Step 3: Select 'Import license file'



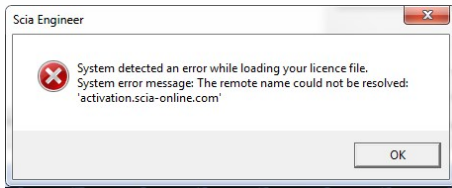
Now you're done!

.... Unless you didn't get the last message, but a different one. In that case, [go to step 4](#).

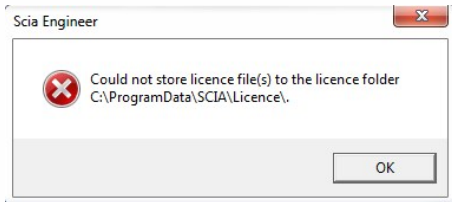
Step 4: Something went wrong...



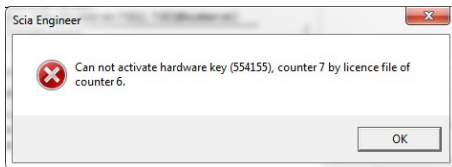
Go to chapter "System could not find attached SCIA dongle" on the facing page



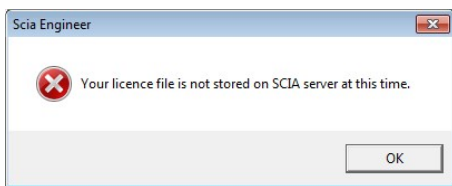
Go to chapter "System detected an error while loading your license file" on page 10



Go to chapter "Could not store license file to the license folder" on page 12



Go to chapter "Counter X by license file of counter Y (X>Y)" on page 14



Go to chapter "Your license file is not stored on SCIA server" on page 15

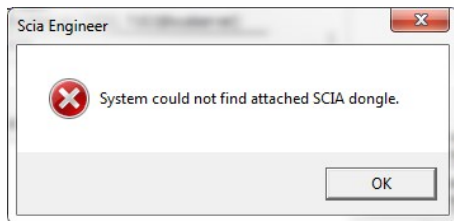


Do you have a different problem? If so, please contact us at support@scia.net with a print screen and a description of the problem.

System could not find attached SCIA dongle

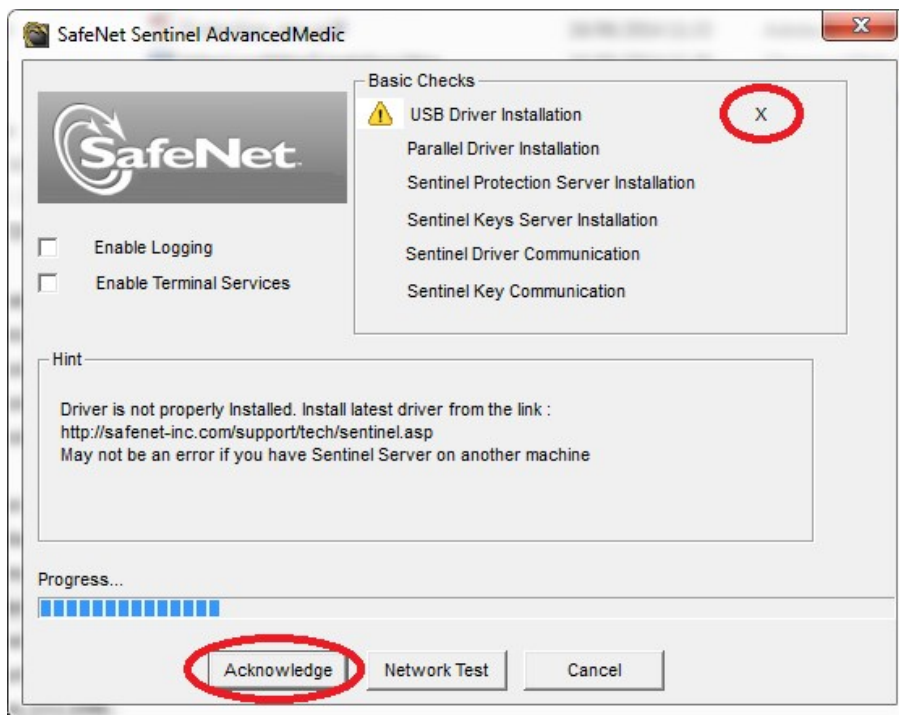
Description

→ The USB license key is not found



Solution

This problem can have 2 different causes.



Reason 1: The driver

1. Run the Sentinel Advanced Medic (extract and run Sam1.3.1.exe) (<http://www.safenet-inc.com/support-downloads/sentinel-drivers/>)
2. If it does not show at least 7.5.8 behind "USB Driver Installation", then run the Sentinel Protection Installer (<http://www.safenet-inc.com/support-downloads/sentinel-drivers/>)

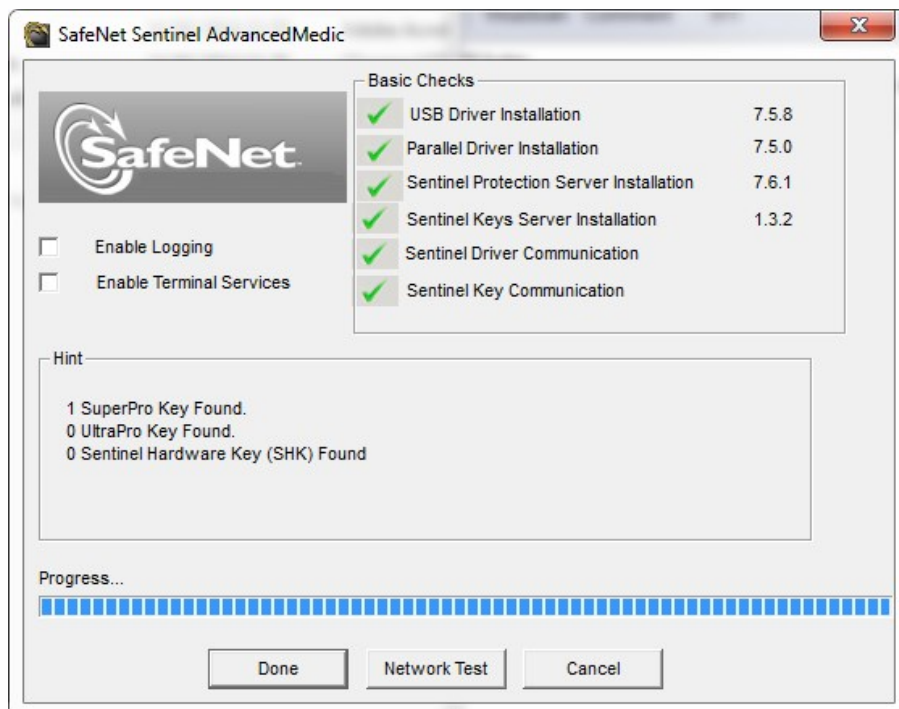
Reason 2: The USB key

1. Is it connected to the computer, and is the green light visible?
2. If no: try again on a different USB port and on a different computer.
3. If the light never lights up, then contact the main office for a replacement.
Replacement is free for customers with maintenance (if it broke down due to normal use) and 75€ (\$80 USD) in other cases. (<http://scia.net/en/contact/offices>)

Checks

Run the Sentinel Advanced Medic (Sam1.3.1.exe) and all checks should be good.

(<http://www.safenet-inc.com/support-downloads/sentinel-drivers/>)



If all checks are good, [try step 3 again](#).

System detected an error while loading your license file

Description

→ The “Protection Setup” could not connect to “activation.scia-online.com”.

Solutions

This problem can be solved in 2 different ways.

Option 1: Fix the internet connection.

1. Can you browse on the internet
2. Is something be blocking the "Protection Setup"? (firewall or anti-virus)

→ The 'Protection Setup' is a program called Lockman.exe, which is stored in the folder where SCIA Engineer is installed (C:\Program Files (x86)\SCIA\EngineerXX).

→ Make sure that your firewall or anti-virus does not prevent lockman.exe from connecting to the internet.

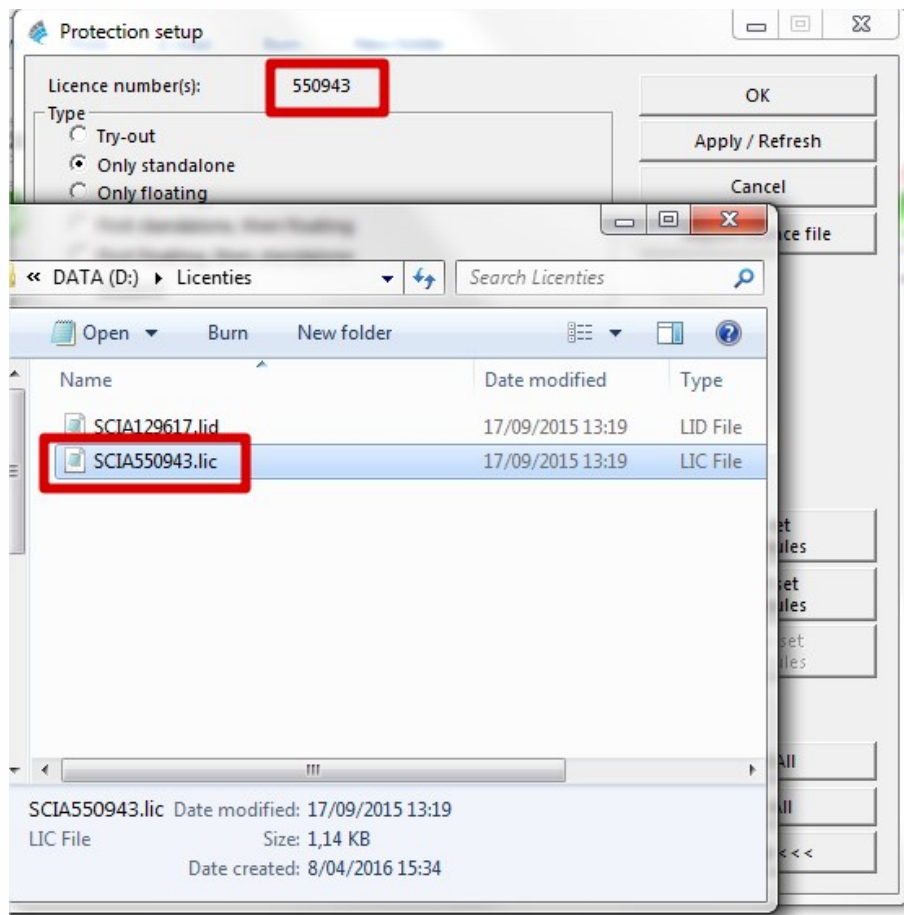
Option 2: Manually load the license file.

→ If you click on "Import license file" in the protection setup, you can click "OK" after receiving the error message. Then you will have the possibility to load in the license file manually.

1. Make sure you have the license file.

(Send a mail to support@scia.net, and indicate the license number on your USB key, which is a 6-digit number, starting with a 5. E.g.: 554155)

1. Pick the license file that matches the license number on your USB key.

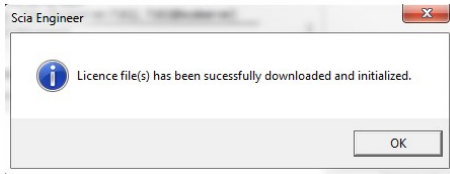




If SCIA support sends you both a .lic and a .e2c file, then always keep these two files together (in the same folder). The .e2c file will be necessary if your licenses contains an edition.

Checks

You should receive the next message:



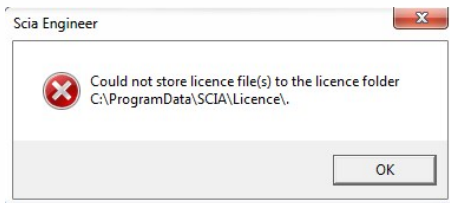
If you do, then you have successfully updated your license.

If you don't, then [go to step 4 and check what is going wrong.](#)

Could not store license file to the license folder

Description

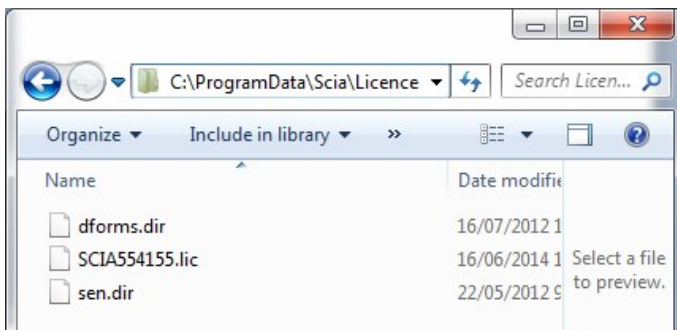
→ The "Protection Setup" can't write in the license folder



Solutions

This problem can be solved in 2 different ways.

Option 1: Go to the license folder (as shown in the message) and create it if necessary

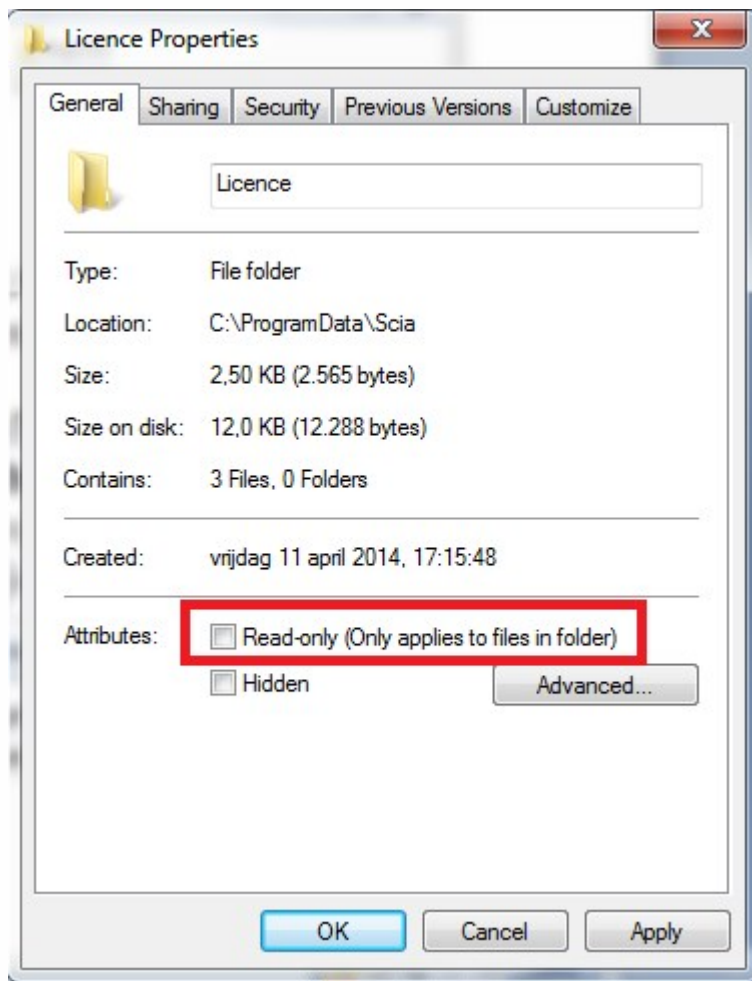


→ Example: C:\ProgramData\SCIA\Licence\

→ Go to the Properties of this folder

(right mouse button in the white space in the folder)

→ Make sure 'Read-Only' is ticked off.

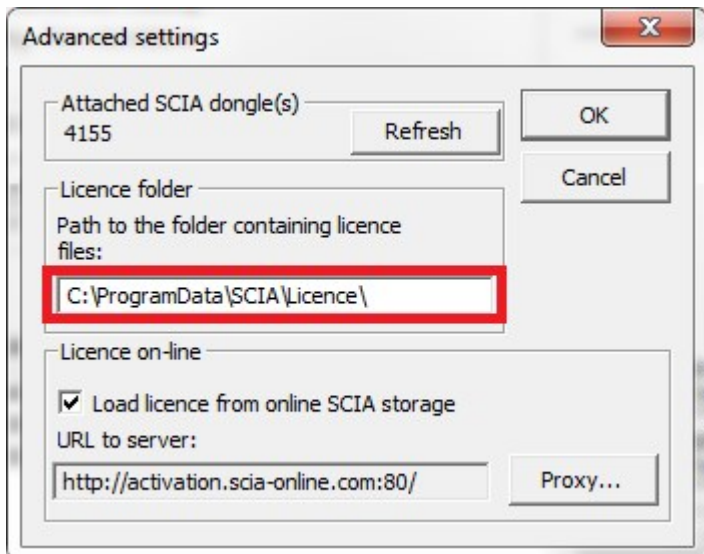
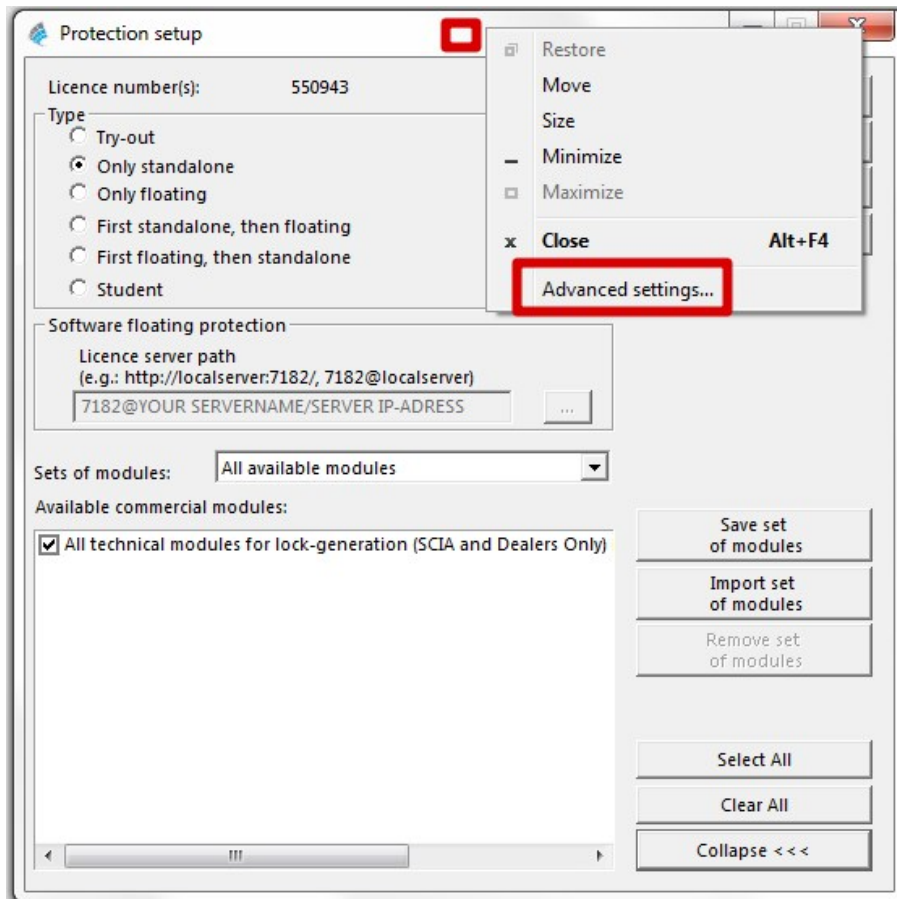


Option 2: Choose a different location to store the license files

→ In the "Protection Setup", you must click with the right mouse button, but the mouse icon must be placed on the title bar while clicking the right mouse button

→ In the next window, you can change the path where the license file must be located (see image below on the right).

→ The new license folder must exist and also NOT be "Read-only".

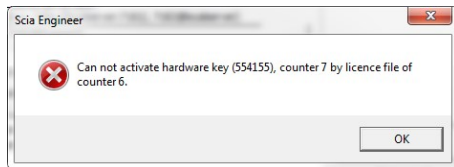


After applying these options, please try to import the license file again.

Counter X by license file of counter Y (X>Y)

Description

→ The license file you are loading is older than the license file on the USB key



Solutions

Get a newer license file by contacting SCIA support.

- Send the image of the message
- Ask them to check the license counter (and possibly generate it again)
- Ask for a new license file
(this is a SCIA5xxxxx.lic file and maybe a SCIA5xxxxx.e2c file)

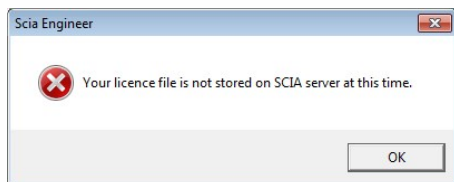
Checks

- Once you receive a response, try to import the license file again
(if you pick a license file manually, then make sure to pick the new one)

Your license file is not stored on SCIA server

Description

- The "Protection Setup" can't find the license files on the SCIA server.



Solution

The license file must be regenerated by contacting SCIA support (support@scia.net).

- Send the image of the message and give them your license key number
(on the back of your dongle, 6 digits, starting with '5xxxxx')
- Ask them to check the license file in the database (and possibly generate it again)
- Ask for a new license file
(this is a SCIA5xxxxx.lic file and maybe a SCIA5xxxxx.e2c file)

Checks

- Once you receive a response, try to import the license file again
(if you pick a license file manually, then make sure to pick the new one)