

Installation Guide

Contacts	3
1. Introduction	5
1.1 Welcome	5
1.2 System requirements	6
Hardware	6
Software	6
2. Installation of SCIA Engineer	8
2.1 Account activation	8
2.2 Installation of SCIA Engineer	10
2.3 Starting SCIA Engineer	12
3. Uninstalling SCIA Engineer	13
3.1 Uninstalling with Add/Remove Programs in Windows	13
3.2 Uninstalling without Add/Remove Programs	14

Contacts

<p>Belgium Headquarters</p> <p>SCIA nv Industrieweg 1007 B-3540 Herk-de-Stad Tel: +32 13 55 17 75 E-mail: info@scia.net</p> <p>Support Phone CAE (SCIA Engineer) Tel: +32 13 55 09 90</p> <p>CAD (Allplan) Tel: +32 13 55 09 80</p> <p>Support E-mail: support@scia.net</p>	<p>France</p> <p>SCIA France sarl Centre d'Affaires 16, place du Général de Gaulle FR-59800 Lille Tel.: +33 3.28.33.28.67 Fax: +33 3.28.33.28.69 E-mail: france@scia.net</p> <p>Agence commerciale 8, Place des vins de france FR-75012 Paris Tel.: +33 3.28.33.28.67 Fax: +33 3.28.33.28.69 E-mail: france@scia.net</p>
<p>Austria</p> <p>SCIA Datenservice Ges.m.b.H. Dresdnerstrasse 68/2/6/9 A-1200 WIEN Tel.: +43 1 7433232-11 Fax: +43 1 7433232-20 E-mail: info@scia.at</p> <p>Support Tel.: +43 1 7433232-12 E-mail: support@scia.net</p>	<p>Germany</p> <p>SCIA Software GmbH Technologie Zentrum Dortmund, Emil-Figge-Strasse 76-80 D-44227 Dortmund Tel.: +49 231/9742586 Fax: +49 231/9742587 E-mail: info@scia.de</p>
<p>Netherlands</p> <p>SCIA Nederland B.V. Wassenaarweg 40 NL-6843 NW ARNHEM Tel.: +31 26 320 12 30 Fax.: +31 26 320 12 39 E-mail: info@scia.net</p>	<p>Switzerland</p> <p>SCIA Swiss Office Dürenbergstrasse 24 CH-3212 Gurmels Tel.: +41 26 341 74 11 Fax: +41 26 341 74 13 E-mail: info@scia.ch</p>
<p>Czech Republic</p> <p>SCIA CZ s.r.o. Praha Evropská 2591/33d 160 00 Praha 6 Tel.: +420 226 205 600 Fax: +420 226 201 673 E-mail: info.praha@scia.cz</p> <p>SCIA CZ s.r.o. Brno Slavickova 827/1a 638 00 Brno</p>	<p>Slovakia</p> <p>SCIA SK s.r.o. Murgašova 1298/16 SK-010 01 Žilina Tel.: +421 415 003 070 Fax: +421 415 003 072 E-mail: info@scia.sk</p>

Tel.: +420 530 501 570 Fax: +420 226 201 673 E-mail: info.brno@scia.cz	
--	--

All information in this document is subject to modification without prior notice. No part of this manual may be reproduced, stored in a database or retrieval system or published, in any form or in any way, electronically, mechanically, by print, photo print, microfilm or any other means without prior written permission from the publisher. SCIA is not responsible for any direct or indirect damage because of imperfections in the documentation and/or the software.

© Copyright 2019 SCIA nv. All rights reserved.

Document created: 25 / 04 / 2019

SCIA Engineer 19.0

1. Introduction

1.1 Welcome

Welcome to the SCIA Engineer Installation Guide. SCIA Engineer is a structural analysis and design program running under Windows 7/8 & Windows 10. It has a large range of applications: from the check of simple frames to the advanced design of complex projects in steel, concrete, wood, etc.

The program handles the calculation of 2D/3D frames, including the profile check and the connection check for steel constructions. Apart from frames, it is also possible to model and analyze plate structures, including advanced concrete calculations.

This manual describes the procedures for a correct installation of the application with a student license.

1.2 System requirements

Hardware

	Minimum	Advised
Processor	Intel Core-i3 or AMD Ryzen 3	Intel Core-i7 or AMD Ryzen 7
Memory (RAM)	2 GB	16 GB, or more
Graphics Controller	256 MB, supporting OpenGL	4 GB, or more
Free disk space	5 GB	/
Minimum resolution	1280 x 800 (4k not supported)	/

Processor

For the processor two parameters are important: the number of cores and the clock frequency. When performing a linear calculation, the number of cores is the main parameter that determine the speed of the calculation. In a nonlinear and eigen-mode calculation, the clock frequency is the determining factor. Next to the previously mentioned calculation types, the design checks run multicore as well. An Intel Core i7 or AMD Ryzen 7 with at least 2.4 GHz is advised.

Memory (RAM)

SCIA Engineer, the solver and the Engineering Report are 3 separate processes that each require memory to perform their actions. Next to these processes, also windows (min. 1.5 GB) and all other applications take some memory in use as well. To not run out of memory when performing memory demanding calculations, it is advised to have at least 16 GB of RAM in the computer.

Graphics controller

A minimum memory of 256MB and the support of OpenGL is required to run SCIA Engineer. This means that SCIA can also be run with an onboard graphics card. For some models that are graphically more demanding, onboard graphic cards may fail to render the structure. For this reason, a dedicated GPU is advised (a low to mid end GPU should be adequate)

HDD

Every hard disk with a free disk space of 5 GB can be used to run SCIA Engineer. This does not mean that the HDD is not important. The read/write speed of the HDD has an influence on the performance of SCIA Engineer. In order to increase performance, an SSD is advised.

Below a table with the available types of SSD's.:

(m)SATA	M.2	PCIe
Cheap - Worst performance	Best price/quality ratio	Expensive - Best performance

Software

Supported Windows OS	Windows 2008 server 64 bit Windows 2012 server 64 bit Windows 7 32/64 bit
----------------------	---

	Windows 8.1 32/64 bit Windows 10 32/64 bit
API link with Revit (http://www.scia.net/revit)	SCIA Engineer 19 is compatible with: Revit 2018, Revit 2019
API link with Tekla	SCIA Engineer 19 is compatible with: Tekla Structures 2017
Etabs	SCIA Engineer 19 is compatible with: Etabs 9.2
IFC	SCIA Engineer 19 is compatible with: IFC version 2x3
SDNF	SCIA Engineer 19 is compatible with: SDNF version 2.0 SDNF version 3.0


2. Installation of SCIA Engineer

This chapter describes the procedure to install a Student version of SCIA Engineer.

2.1 Account activation


An automatic mail is sent to your inbox for the activation of your SCIA Engineer license. In this mail a link is sent to finish your registration. By clicking on this link you open the following page:

On this page your password is set. The 'User name' is your email.

 This mail is only sent to you when registering as a new user.

After setting the password click on [Activate].

This email and password needs to be used during the installation of SCIA Engineer to gain access to the software. If SCIA Engineer is already installed these credentials need to be filled in into the protection setup. SCIA Engineer will automatically obtain the license from the cloud license server when opening the software and give it back when shutting it down.

 This means that to make use of the SCIA cloud license there should be connection to the internet when opening and closing the software.

For multiple users:

The admin of the license can login to the SCIA Cloud License Portal to manage the SCIA License (s) at <https://protection.scia.net>. Here users can be added (and removed) that are allowed to use your available SCIA Licenses.



To add a user click the manage license icon next to your SCIA License and fill in the email of the user that should be added in the window below:

Add user for this license

 Administrator

When 'Administrator' is checked this user will have administration rights as well. This means he can add, block and remove users.


If this user is already registered he can now use the SCIA License. If the user is not registered an automatic email will be sent to set a password. After the password is set the new user can start using the licenses.



To block a user press the icon above, a blocked user can no longer use the license but can be added again to the list without the need of registering again.



To remove a user press the icon above, a removed user can no longer use the license. If this user is added again to the list he needs to register another time to start using the software again.

 This option is important to use if a user leaves the company to make sure he can not use the license anymore.

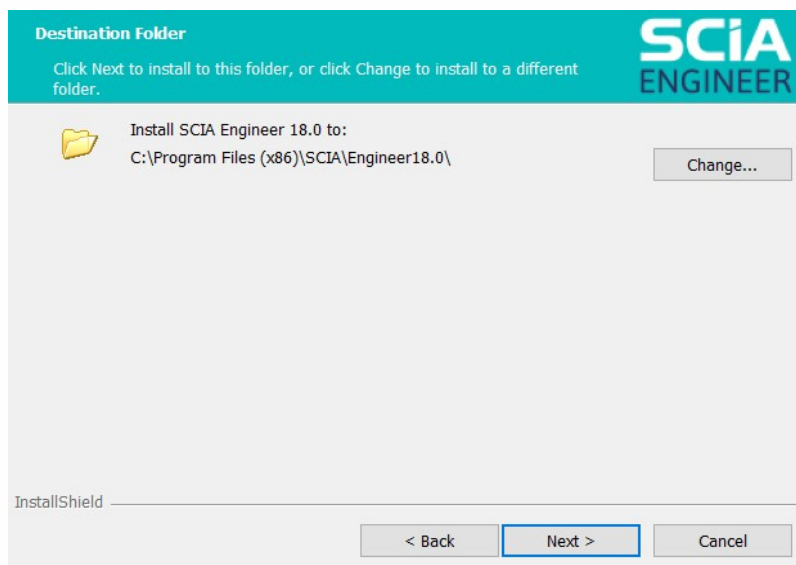
2.2 Installation of SCIA Engineer

1. You can start the installation using the web setup:



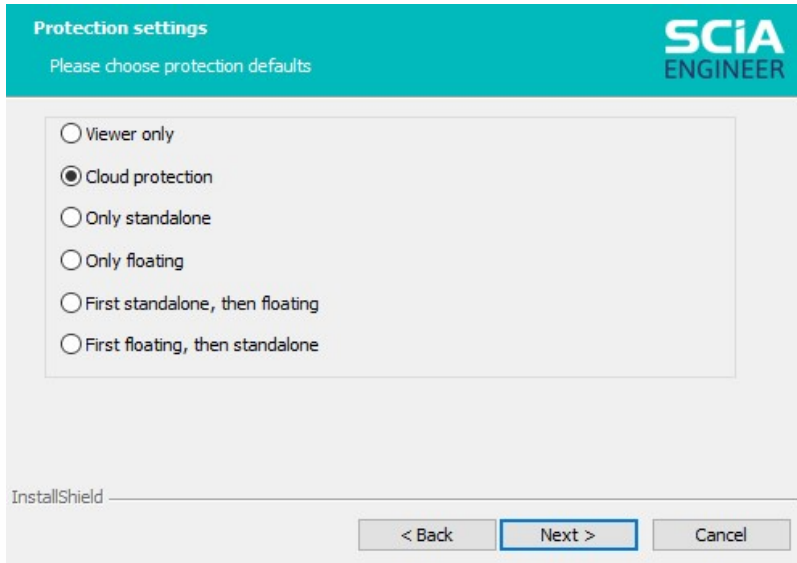
https://cdnstore.scia.net/sen/latest/SCIAEngineer_student_setup.exe

2. In the dialog box which appears, select the language for installation. The language chosen for installation is also the default language that will be used for the help files of SCIA Engineer.
3. The Welcome screen for installation appears. Press [Next] to continue.
4. Fill in the customer information and press [Next] to continue.
5. In the dialog Choose Destination Location, the folder where the files will be installed can be specified. By default the destination folder is created in Program Files. It is advised to use this default location.

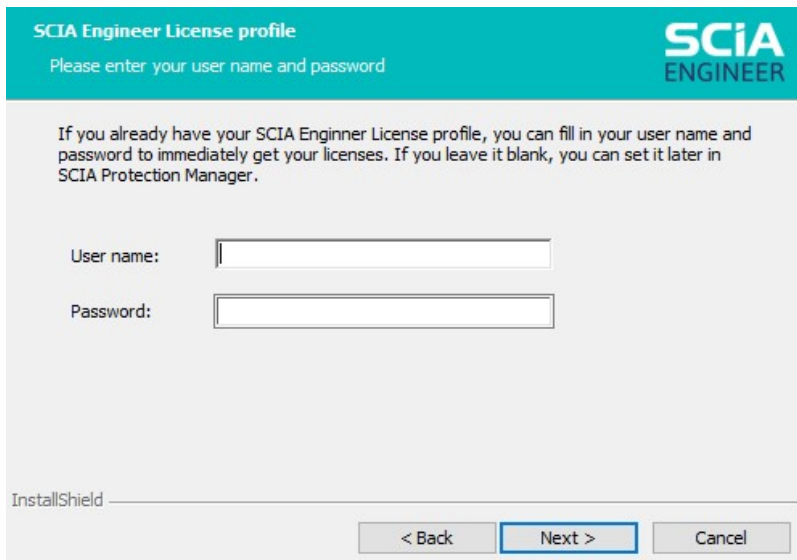


Press [Next] to continue.

6. Select the type of installation. A typical installation installs the standard version of SCIA Engineer. With the 'custom' installation the user can set the parts of the software (add-ons and languages) to be installed. Press [Next] to continue.
7. Select the languages to be installed. Press [Next] to continue.
8. Choose the protection type. This manual handles the Cloud protection. If u use an other type of protection please switch to the correct manual. Choose 'Cloud protection' and press [Next] to continue.



9. Set the username and password to be used and press [Next] to continue.



10. Press [Install] to start the installation.
11. After installation, the message appears that SCiA Engineer has been installed successfully. Press [Finish] to end the installation procedure.

2.3 Starting SCIA Engineer

You should be logged in when starting SCIA engineer. This is done by opening the protection setup:

Protection setup

Licence number(s):

Type

Cloud protection

Only standalone

Only floating

First standalone, then floating

First floating, then standalone

Cloud protection service

Activation IDs

Login

Add ID

Remove ID

Maximum borrowing period: 5 days

Sets of modules: All available modules

Available commercial modules:

Save set of modules

Import set of modules

Remove set of modules

Select All

Clear All

Collapse <<<

OK

Apply / Refresh

Cancel

Press [Login] and fill in your credentials.

Provide credentials

User name:

Password:

Remove credentials

Clear

Validate...

Cancel



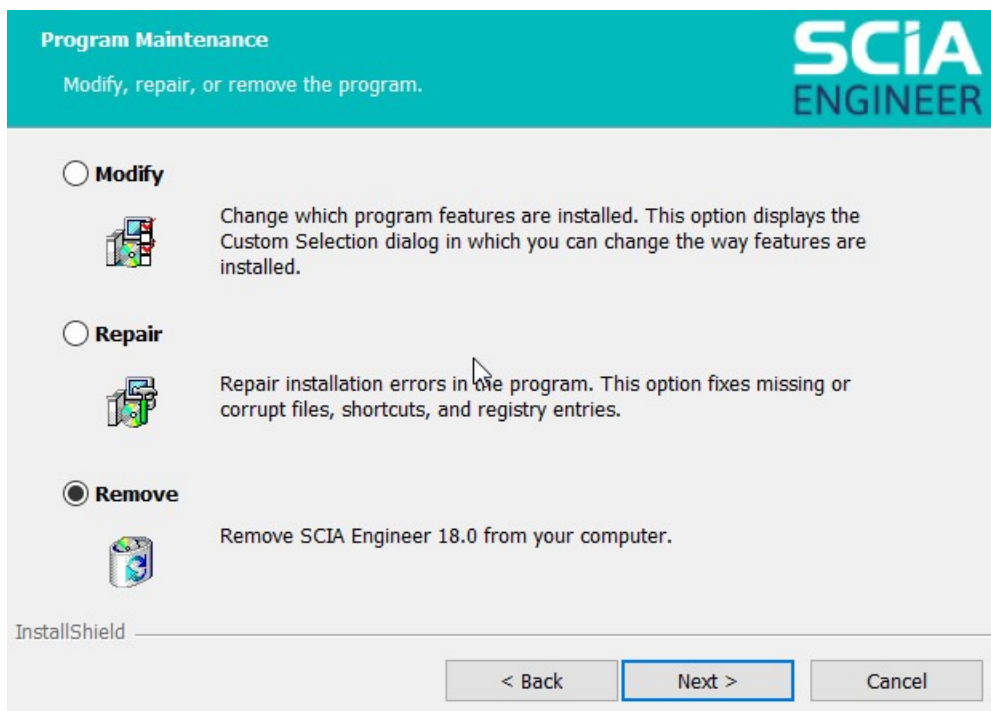
This is only necessary if your credentials were not filled in during the installation or if you want to switch accounts.

3. Uninstalling SCIA Engineer

3.1 Uninstalling with Add/Remove Programs in Windows

SCIA Engineer can be uninstalled like any other windows based software application:

1. Go to Add or Remove Programs through Start > Settings > Control Panel > Add or Remove Programs.
2. A list with installed software applications will appear. Select SCIA Engineer and press [Change/Remove]
3. In the dialog box that appears choose the option Remove



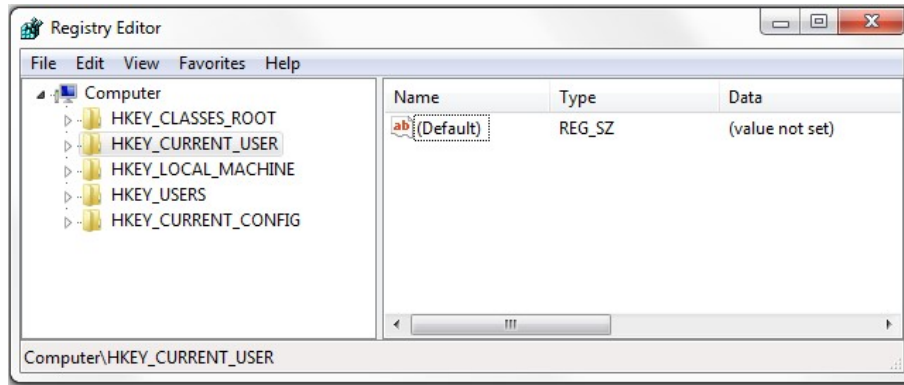
4. Press [Next] to start the uninstall procedure.

After completing the uninstallation, some settings remain in the Registry of windows. These traces can be deleted manually. Deleting these entries can be necessary when problems occur with a new installation.

1. Open the Run dialog box through Start > Run
2. Type regedit and press [OK]

Take note, for this step it is required to have Administrator rights!

3. The Registry Editor appears.



4. Go to the following key's and delete them using the Delete button.

HKEY_CURRENT_USER\Software\SCIA\ESA*

HKEY_LOCAL_MACHINE\Software\SCIA\ESA*

Where * represents the version number.

5. Close the Registry Editor through File > Exit

After completing the uninstallation, some folders remain on your hard disk and can be deleted manually:

32 bits computer: C:\Program Files\SCIA\Engineer**

64 bits computer: C:\Program Files (x86)\SCIA\Engineer**

Also the following folders remain on your hard disk and can be deleted:

Windows 7/8/10: C:\Users\#User#\Esa**

C:\Users\#User#\Documents\Esa**

Where ** represents the version number



These folders can be deleted using Windows Explorer. Please note that the first folder can contain projects so the user must be absolutely sure if he/she wishes to delete these folders.

3.2 Uninstalling without Add/Remove Programs

Sometimes SCIA Engineer cannot be uninstalled using the "Add/Remove programs" feature of Windows. Sometimes an error message presents itself or SCIA Engineer is not added to Add/Remove Programs. In this case, it is not possible to uninstall the software.

This problem can occur with any Windows based program.

To easily uninstall Scia Engineer, use the following procedure:

Go to Start > Run and in the dialog that appears, type the following command:

```
msiexec /x {A39DB31A-4752-4611-A2F9-299324BED8EF}
```

This will execute the same procedures as uninstalling through Add/Remove Programs.